

Datasheet for ABIN540284
anti-SREBF1 antibody (AA 300-400)[Go to Product page](#)

1 Image

Overview

Quantity:	100 µL
Target:	SREBF1
Binding Specificity:	AA 300-400
Reactivity:	Human, Rat, Mouse, Pig, Hamster, Goat, Cow, Sheep
Host:	Rabbit
Clonality:	Polyclonal
Conjugate:	This SREBF1 antibody is un-conjugated
Application:	Western Blotting (WB)

Product Details

Purpose:	Rabbit polyclonal antibody raised against synthetic peptide of SREBF1.
Immunogen:	A synthetic peptide corresponding to amino acids 300-400 of human SREBF1.
Specificity:	This antibody is specific to SREBP1.
Cross-Reactivity:	Cow, Goat, Hamster, Human, Mouse, Pig, Rat, Sheep
Characteristics:	Antibody Reactive Against Synthetic Peptide.

Target Details

Target:	SREBF1
Alternative Name:	SREBF1 / SREBP1 (SREBF1 Products)
Gene ID:	6720

Target Details

Pathways:	AMPK Signaling , Caspase Cascade in Apoptosis , Negative Regulation of Hormone Secretion , Regulation of Lipid Metabolism by PPARalpha
-----------	--

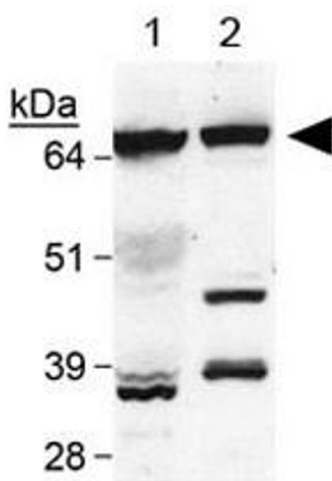
Application Details

Application Notes:	Western Blot (2 µg/mL) The optimal working dilution should be determined by the end user.
Restrictions:	For Research Use only

Handling

Format:	Liquid
Buffer:	In Tris-glycine, 150 mM NaCl (0.05 % sodium azide)
Preservative:	Sodium azide
Precaution of Use:	This product contains Sodium azide: a POISONOUS AND HAZARDOUS SUBSTANCE which should be handled by trained staff only.
Storage:	4 °C,-20 °C
Storage Comment:	Store at 4°C for short term. For long term storage store at -20°C. Aliquot to avoid repeated freezing and thawing.

Images



Western Blotting

Image 1. Western blot analysis of SREBF1 in human liver (Lane 1) and mouse liver (Lane 2) with SREBF1 polyclonal antibody .