

Datasheet for ABIN540292
anti-SLC31A2 antibody (AA 50-100)[Go to Product page](#)[1 Image](#)[1 Publication](#)

Overview

Quantity:	100 µL
Target:	SLC31A2
Binding Specificity:	AA 50-100
Reactivity:	Human, Mouse
Host:	Rabbit
Clonality:	Polyclonal
Conjugate:	This SLC31A2 antibody is un-conjugated
Application:	Western Blotting (WB)

Product Details

Purpose:	Rabbit polyclonal antibody raised against synthetic peptide of SLC31A2.
Immunogen:	A synthetic peptide corresponding to amino acids 50-100 of human SLC31A2.
Cross-Reactivity:	Human, Mouse

Target Details

Target:	SLC31A2
Alternative Name:	CTR2 (SLC31A2 Products)
Gene ID:	1318

Application Details

Application Notes:	Western Blot (1 µg/mL) The optimal working dilution should be determined by the end user.
Restrictions:	For Research Use only

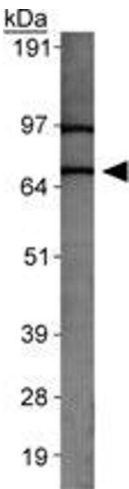
Handling

Format:	Liquid
Buffer:	In PBS (30 % glycerol, 0.09 % sodium azide)
Preservative:	Sodium azide
Precaution of Use:	This product contains Sodium azide: a POISONOUS AND HAZARDOUS SUBSTANCE which should be handled by trained staff only.
Storage:	4 °C,-20 °C
Storage Comment:	Store at 4°C for short term. For long term storage store at -20°C. Aliquot to avoid repeated freezing and thawing.

Publications

Product cited in:	Bertinato, Swist, Plouffe, Brooks, Labbé: "Ctr2 is partially localized to the plasma membrane and stimulates copper uptake in COS-7 cells." in: The Biochemical journal , Vol. 409, Issue 3, pp. 731-40, (2008) (PubMed).
-------------------	--

Images



Western Blotting

Image 1. Western blot analysis of SLC31A2 in MEF cell lysate with SLC31A2 polyclonal antibody .