



Datasheet for ABIN540310
anti-SAT1 antibody (AA 100-171)



[Go to Product page](#)

1 Image

Overview

Quantity:	100 µL
Target:	SAT1
Binding Specificity:	AA 100-171
Reactivity:	Human, Mouse, Rat, Xenopus laevis, Cow, Goat, Pig, Chicken
Host:	Rabbit
Clonality:	Polyclonal
Conjugate:	This SAT1 antibody is un-conjugated
Application:	Western Blotting (WB)

Product Details

Purpose:	Rabbit polyclonal antibody raised against synthetic peptide of SAT1.
Immunogen:	A synthetic peptide corresponding to amino acids 100-171 of human SAT1.
Cross-Reactivity:	Chicken, Cow, Goat, Human, Mouse, Pig, Rat, Xenopus laevis
Characteristics:	Antibody Reactive Against Synthetic Peptide.

Target Details

Target:	SAT1
Alternative Name:	SAT1 (SAT1 Products)
Gene ID:	6303

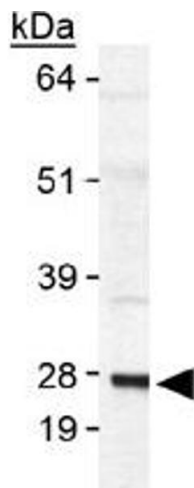
Application Details

Application Notes:	Western Blot (2 µg/mL) The optimal working dilution should be determined by the end user.
Restrictions:	For Research Use only

Handling

Format:	Liquid
Buffer:	In Tris-glycine, 150 mM NaCl (0.05 % sodium azide)
Preservative:	Sodium azide
Precaution of Use:	This product contains Sodium azide: a POISONOUS AND HAZARDOUS SUBSTANCE which should be handled by trained staff only.
Storage:	4 °C,-20 °C
Storage Comment:	Store at 4°C for short term. For long term storage store at -20°C. Aliquot to avoid repeated freezing and thawing.

Images



Western Blotting

Image 1. Western blot analysis of SAT1 in human SAT1 transfected lysate using with SAT1 polyclonal antibody .