



Datasheet for ABIN540322  
**anti-PTGDS antibody (AA 120-190)**



[Go to Product page](#)

1 Image

1 Publication

## Overview

Quantity:	100 µL
Target:	PTGDS
Binding Specificity:	AA 120-190
Reactivity:	Human
Host:	Rabbit
Clonality:	Polyclonal
Conjugate:	This PTGDS antibody is un-conjugated
Application:	Western Blotting (WB)

## Product Details

Purpose:	Rabbit polyclonal antibody raised against partial recombinant PTGDS.
Immunogen:	Recombinant protein corresponding to amino acids 120-190 of human PTGDS.
Specificity:	The epitope recognized by this antibody maps to region within residue 120-190 of human PTGDS. [Swiss-Prot# P41222]
Cross-Reactivity:	Cat, Cow, Dog, Human, Monkey, Mouse, Primate, Rabbit, Rat

## Target Details

Target:	PTGDS
Alternative Name:	PTGDS ( <a href="#">PTGDS Products</a> )
Gene ID:	5730

## Application Details

Application Notes:	Western Blot (2 µg/mL) The optimal working dilution should be determined by the end user.
Restrictions:	For Research Use only

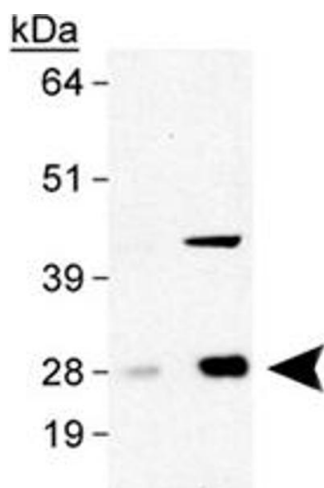
## Handling

Format:	Liquid
Buffer:	In PBS (30 % glycerol, 0.09 % sodium azide)
Preservative:	Sodium azide
Precaution of Use:	This product contains Sodium azide: a POISONOUS AND HAZARDOUS SUBSTANCE which should be handled by trained staff only.
Storage:	4 °C,-20 °C
Storage Comment:	Store at 4°C for short term. For long term storage store at -20°C. Aliquot to avoid repeated freezing and thawing.

## Publications

Product cited in:	Kanekiyo, Ban, Aritake, Huang, Qu, Okazaki, Mohri, Murayama, Ozono, Taniike, Goto, Urade: "Lipocalin-type prostaglandin D synthase/beta-trace is a major amyloid beta-chaperone in human cerebrospinal fluid." in: <b>Proceedings of the National Academy of Sciences of the United States of America</b> , Vol. 104, Issue 15, pp. 6412-7, (2007) ( <a href="#">PubMed</a> ).
-------------------	--

## Images



### Western Blotting

**Image 1.** Western blot analysis of PTGDS in human brain lysates with PTGDS polyclonal antibody at 0.5 and 2.0 µg/mL .