

Datasheet for ABIN540323
anti-PSMD10 antibody (AA 100-200)[Go to Product page](#)

1 Image

Overview

Quantity:	100 µL
Target:	PSMD10
Binding Specificity:	AA 100-200
Reactivity:	Human, Mouse, Rat, Zebrafish (Danio rerio), Cow, Pig
Host:	Rabbit
Clonality:	Polyclonal
Conjugate:	This PSMD10 antibody is un-conjugated
Application:	Western Blotting (WB)

Product Details

Purpose:	Rabbit polyclonal antibody raised against synthetic peptide of PSMD10.
Immunogen:	A synthetic peptide corresponding to amino acids 100-200 of human PSMD10.
Cross-Reactivity:	Cow, Human, Mouse, Pig, Rat, Zebrafish (Danio rerio)
Characteristics:	Antibody Reactive Against Synthetic Peptide.

Target Details

Target:	PSMD10
Alternative Name:	PSMD10 / Gankyrin (PSMD10 Products)
Gene ID:	5716
Pathways:	Mitotic G1-G1/S Phases , DNA Replication , Maintenance of Protein Location , Synthesis of DNA ,

Target Details

Ubiquitin Proteasome Pathway

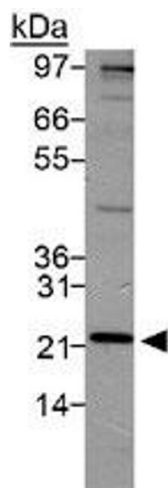
Application Details

Application Notes:	Western Blot (2 µg/mL) The optimal working dilution should be determined by the end user.
Restrictions:	For Research Use only

Handling

Format:	Liquid
Buffer:	In Tris-glycine, 150 mM NaCl (0.05 % sodium azide)
Preservative:	Sodium azide
Precaution of Use:	This product contains Sodium azide: a POISONOUS AND HAZARDOUS SUBSTANCE which should be handled by trained staff only.
Storage:	4 °C,-20 °C
Storage Comment:	Store at 4°C for short term. For long term storage store at -20°C. Aliquot to avoid repeated freezing and thawing.

Images



Western Blotting

Image 1. Western blot analysis of PSMD10 in HeLa lysate using with PSMD10 polyclonal antibody .