

Datasheet for ABIN540359

anti-Nth Endonuclease III-Like 1 (NTHL1) antibody[Go to Product page](#)**1** Image**1** Publication

Overview

Quantity:	200 µL
Target:	Nth Endonuclease III-Like 1 (NTHL1)
Reactivity:	Human, Rat, Cow
Host:	Rabbit
Clonality:	Polyclonal
Conjugate:	Un-conjugated
Application:	Western Blotting (WB), Immunocytochemistry (ICC)

Product Details

Purpose:	Rabbit polyclonal antibody raised against synthetic peptide of NTHL1.
Immunogen:	A synthetic peptide (conjugated with KLH) corresponding to human NTHL1.
Specificity:	This antibody is specific to NTH1.
Cross-Reactivity:	Cow, Human, Rat
Characteristics:	Antibody Reactive Against Synthetic Peptide.

Target Details

Target:	Nth Endonuclease III-Like 1 (NTHL1)
Alternative Name:	NTH1 (NTHL1 Products)
Gene ID:	4913

Application Details

Application Notes:	Immunocytochemistry (1:800) Western Blot (1:500) The optimal working dilution should be determined by the end user.
Restrictions:	For Research Use only

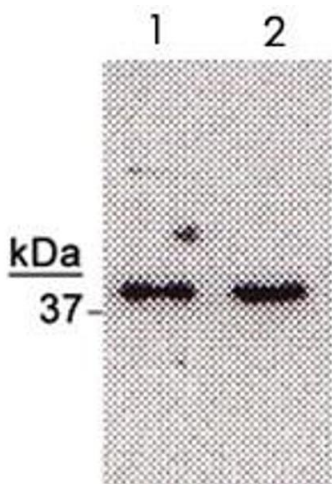
Handling

Format:	Liquid
Buffer:	In PBS (0.05 % sodium azide)
Preservative:	Sodium azide
Precaution of Use:	This product contains Sodium azide: a POISONOUS AND HAZARDOUS SUBSTANCE which should be handled by trained staff only.
Storage:	-20 °C,-80 °C
Storage Comment:	Store at -20°C or -80°C. Aliquot to avoid repeated freezing and thawing.

Publications

Product cited in:	Oreilly, Vitiello, Gehen, Stavarsky: "p21(Cip1/WAF1/Sdi1) does not affect expression of base excision DNA repair enzymes during chronic oxidative stress." in: Antioxidants & redox signaling , Vol. 7, Issue 5-6, pp. 719-25, (2005) (PubMed).
-------------------	--

Images



Western Blotting

Image 1. Western blot analysis of NTHL1 in HeLa (Lane2) and K-562 (Lane1) cell extracts with NTHL1 polyclonal antibody . Western blot data courtesy of Mark Kelly, Indiana Univ.