



Datasheet for ABIN540385
anti-AQP2 antibody (AA 200-300)



[Go to Product page](#)

2 Images

Overview

Quantity:	100 µL
Target:	AQP2
Binding Specificity:	AA 200-300
Reactivity:	Human, Rat, Mouse, Cow, Sheep, Pig
Host:	Rabbit
Clonality:	Polyclonal
Conjugate:	This AQP2 antibody is un-conjugated
Application:	Western Blotting (WB), Immunocytochemistry (ICC), Immunohistochemistry (Paraffin-embedded Sections) (IHC (p))

Product Details

Purpose:	Rabbit polyclonal antibody raised against synthetic peptide of Aqp2.
Immunogen:	A synthetic peptide corresponding to residues within amino acids 200-300 at C-terminus of rat Aqp2.
Cross-Reactivity:	Cow, Human, Mouse, Pig, Rat, Sheep

Target Details

Target:	AQP2
Alternative Name:	Aqp2 (AQP2 Products)
Gene ID:	25386

Target Details

Pathways: [Response to Water Deprivation](#)

Application Details

Application Notes: Immunocytochemistry/Immunofluorescence (1:100-1:200)
Immunohistochemistry (1:100-1:200)
Immunohistochemistry (Formalin/PFA-fixed paraffin-embedded sections) (1:100-1:200)
Western Blot (1:1000-1:5000)
The optimal working dilution should be determined.

Restrictions: For Research Use only

Handling

Format: Liquid

Buffer: In PBS (0.05 % sodium azide).

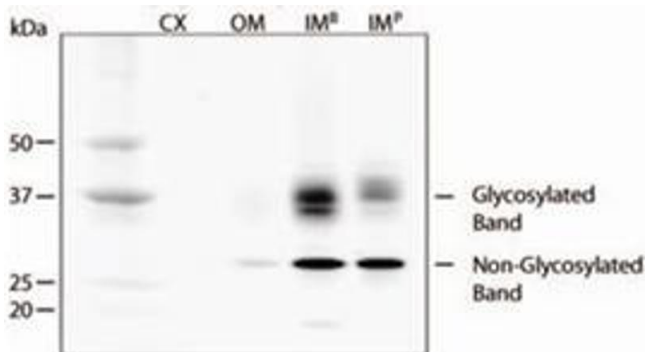
Preservative: Sodium azide

Precaution of Use: This product contains Sodium azide: a POISONOUS AND HAZARDOUS SUBSTANCE which should be handled by trained staff only.

Storage: 4 °C, -20 °C

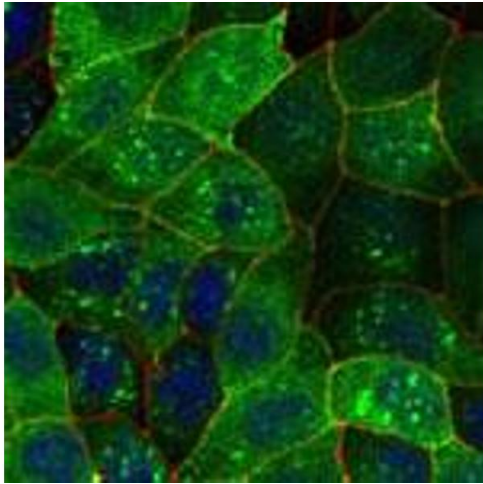
Storage Comment: Store at 4°C for short term. For long term storage store at -20°C.
Aliquot to avoid repeated freezing and thawing.

Images



Western Blotting

Image 1. Western blot analysis of Aqp2 in rat kidney extracts using Aqp2 polyclonal antibody. Key: CX=Cortex, OM=Outer Medulla, IMB =Inner Medulla Base, IMP = Inner Medulla Papilla.



Immunofluorescence

Image 2. Staining of Aqp2 on mpkCCD cell line using Aqp2 polyclonal antibody .