

Datasheet for ABIN540414
anti-GPIHBP1 antibody (AA 170-250)[1 Image](#)[1 Publication](#)[Go to Product page](#)

Overview

Quantity:	100 µL
Target:	GPIHBP1
Binding Specificity:	AA 170-250
Reactivity:	Mouse
Host:	Rabbit
Clonality:	Polyclonal
Conjugate:	This GPIHBP1 antibody is un-conjugated
Application:	Western Blotting (WB)

Product Details

Purpose:	Rabbit polyclonal antibody raised against synthetic peptide of Gpihbp1.
Immunogen:	A synthetic peptide corresponding to amino acids 170-250 of mouse Gpihbp1.
Cross-Reactivity:	Mouse
Characteristics:	Antibody Reactive Against Synthetic Peptide.

Target Details

Target:	GPIHBP1
Alternative Name:	GPIHBP1 / GPI-HBP1 (GPIHBP1 Products)
Gene ID:	68453

Application Details

Application Notes:	Western Blot (2 µg/ mL) The optimal working dilution should be determined by the end user.
Restrictions:	For Research Use only

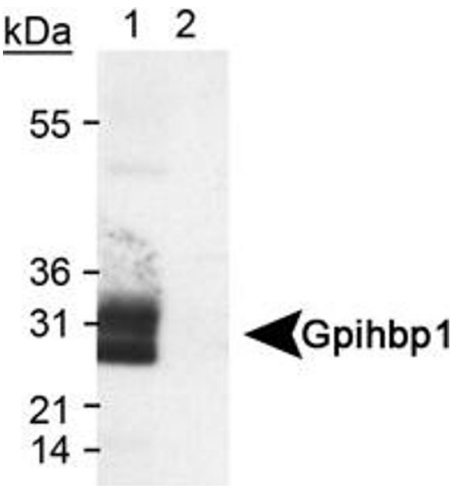
Handling

Format:	Liquid
Buffer:	In Tris-glycine, 150 mM NaCl (0.05 % sodium azide)
Preservative:	Sodium azide
Precaution of Use:	This product contains Sodium azide: a POISONOUS AND HAZARDOUS SUBSTANCE which should be handled by trained staff only.
Storage:	-20 °C,-80 °C
Storage Comment:	Store at -20°C or -80°C. Aliquot to avoid repeated freezing and thawing.

Publications

Product cited in:	Beigneux, Gin, Davies, Weinstein, Bensadoun, Ryan, Fong, Young: "Glycosylation of Asn-76 in mouse GPIHBP1 is critical for its appearance on the cell surface and the binding of chylomicrons and lipoprotein lipase." in: Journal of lipid research , Vol. 49, Issue 6, pp. 1312-21, (2008) (PubMed).
-------------------	--

Images



Western Blotting

Image 1. Western blot analysis of Gpihbp1 in transfected lysate (Lane 1) using Gpihbp1 polyclonal antibody . An empty vector lysate was used as a negative control (Lane 2).