



[Go to Product page](#)

Datasheet for ABIN540418

anti-DISC1 antibody (AA 700-800)

1 Image

3 Publications

Overview

Quantity:	100 µL
Target:	DISC1
Binding Specificity:	AA 700-800
Reactivity:	Mouse, Rat
Host:	Rabbit
Clonality:	Polyclonal
Conjugate:	This DISC1 antibody is un-conjugated
Application:	Western Blotting (WB), Immunohistochemistry (Paraffin-embedded Sections) (IHC (p))

Product Details

Purpose:	Rabbit polyclonal antibody raised against synthetic peptide of Disc1.
Immunogen:	A synthetic peptide corresponding to amino acids 700-800 of mouse Disc1.
Cross-Reactivity:	Mouse, Rat
Characteristics:	Antibody Reactive Against Synthetic Peptide.

Target Details

Target:	DISC1
Alternative Name:	DISC1 (DISC1 Products)
Gene ID:	244667
Pathways:	Regulation of Cell Size

Application Details

Application Notes: Immunohistochemistry (Formalin/PFA-fixed paraffin-embedded sections) (2.5-5 µg/mL)
The optimal working dilution should be determined by the end user.

Restrictions: For Research Use only

Handling

Format: Liquid

Buffer: In Tris-glycine, 150 mM NaCl (0.05 % sodium azide)

Preservative: Sodium azide

Precaution of Use: This product contains Sodium azide: a POISONOUS AND HAZARDOUS SUBSTANCE which should be handled by trained staff only.

Storage: -20 °C,-80 °C

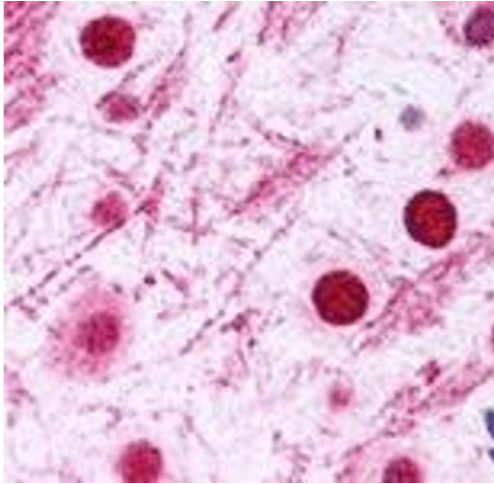
Storage Comment: Store at -20°C or -80°C.
Aliquot to avoid repeated freezing and thawing.

Publications

Product cited in: Hayashi, Portaro, Bastos, Guerreiro, Oliveira, Gorrão, Tambourgi, SantAnna, Whiting, Camargo, Konno, Brandon, Camargo: "Inhibition of NUDEL (nuclear distribution element-like)-oligopeptidase activity by disrupted-in-schizophrenia 1." in: **Proceedings of the National Academy of Sciences of the United States of America**, Vol. 102, Issue 10, pp. 3828-33, (2005) ([PubMed](#)).

Brandon, Handford, Schurov, Rain, Pelling, Duran-Jimeniz, Camargo, Oliver, Beher, Shearman, Whiting: "Disrupted in Schizophrenia 1 and Nudel form a neurodevelopmentally regulated protein complex: implications for schizophrenia and other major neurological disorders." in: **Molecular and cellular neurosciences**, Vol. 25, Issue 1, pp. 42-55, (2004) ([PubMed](#)).

Hodgkinson, Goldman, Jaeger, Persaud, Kane, Lipsky, Malhotra: "Disrupted in schizophrenia 1 (DISC1): association with schizophrenia, schizoaffective disorder, and bipolar disorder." in: **American journal of human genetics**, Vol. 75, Issue 5, pp. 862-72, (2004) ([PubMed](#)).



Immunohistochemistry

Image 1. Staining of Disc1 on mouse brain neurons, glial cells, and white matter using Disc1 polyclonal antibody .