

Datasheet for ABIN540435
anti-SYCP1 antibody (C-Term)[Go to Product page](#)

2 Images

2 Publications

Overview

Quantity:	100 µL
Target:	SYCP1
Binding Specificity:	C-Term
Reactivity:	Mouse
Host:	Rabbit
Clonality:	Polyclonal
Conjugate:	This SYCP1 antibody is un-conjugated
Application:	Immunofluorescence (IF), Immunohistochemistry (IHC), Immunohistochemistry (Paraffin-embedded Sections) (IHC (p)), Immunohistochemistry (Frozen Sections) (IHC (fro))

Product Details

Purpose:	Rabbit polyclonal antibody raised against synthetic peptide of Sycp1.
Immunogen:	A synthetic peptide corresponding to C-terminus of mouse Sycp1.
Isotype:	IgG
Specificity:	This antibody is specific to mouse SCP1.
Cross-Reactivity:	Mouse, Rat

Target Details

Target:	SYCP1
Alternative Name:	SYCP1 / SCP1 (SYCP1 Products)

Target Details

Gene ID: 20957

Application Details

Application Notes: The optimal working dilution should be determined by the end user.

Restrictions: For Research Use only

Handling

Format: Liquid

Buffer: In Tris-citrate/phosphate buffer, pH 7.0-8.0 (0.09 % sodium azide)

Preservative: Sodium azide

Precaution of Use: This product contains Sodium azide: a POISONOUS AND HAZARDOUS SUBSTANCE which should be handled by trained staff only.

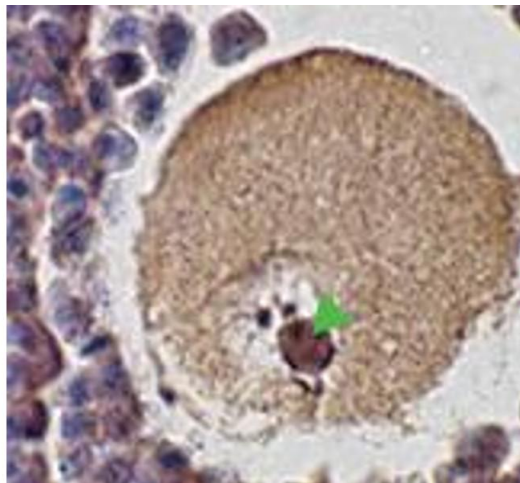
Storage: 4 °C

Storage Comment: Store at 4°C. Do not freeze.

Publications

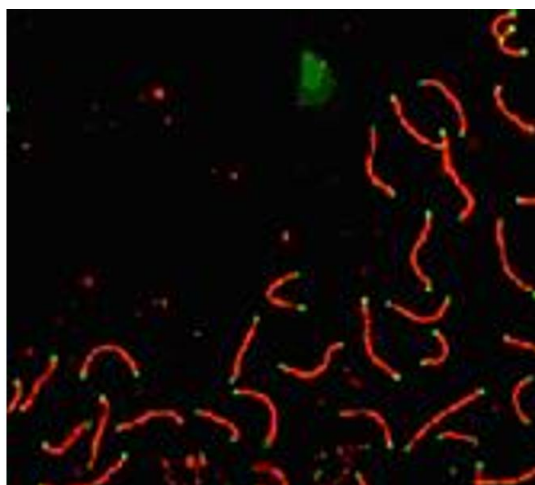
Product cited in: Brown, Hwang, Schlegel, Morris: "Small ubiquitin-related modifier (SUMO)-1, SUMO-2/3 and SUMOylation are involved with centromeric heterochromatin of chromosomes 9 and 1 and proteins of the synaptonemal complex during meiosis in men." in: **Human reproduction (Oxford, England)**, Vol. 23, Issue 12, pp. 2850-7, (2008) ([PubMed](#)).

Dann, Alvarado, Hammer, Garbers: "Heritable and stable gene knockdown in rats." in: **Proceedings of the National Academy of Sciences of the United States of America**, Vol. 103, Issue 30, pp. 11246-51, (2006) ([PubMed](#)).



Immunohistochemistry

Image 1. Punctate staining of murine Sycp1 in mouse ovary using Sycp1 polyclonal antibody .



Immunofluorescence

Image 2. Immunofluorescent staining of Sycp1 in mouse pachytene preparation (red) using Sycp1 polyclonal antibody . CDK2 staining, near telomeres, is also present (green).