

Datasheet for ABIN540564

anti-Lamin B1 antibody (C-Term)



[Go to Product page](#)

2 Images

1 Publication

Overview

Quantity:	100 µg
Target:	Lamin B1 (LMNB1)
Binding Specificity:	C-Term
Reactivity:	Human, Mouse, Rat
Host:	Rabbit
Clonality:	Polyclonal
Conjugate:	This Lamin B1 antibody is un-conjugated
Application:	Western Blotting (WB), Immunohistochemistry (Paraffin-embedded Sections) (IHC (p)), Immunocytochemistry (ICC), Immunohistochemistry (Frozen Sections) (IHC (fro))

Product Details

Purpose:	Rabbit polyclonal antibody raised against synthetic peptide of LMNB1.
Immunogen:	A synthetic peptide corresponding to amino acids at C-terminus of human LMNB1.
Isotype:	IgG
Specificity:	Different from the related rat and mouse sequence by three amino acids.
Cross-Reactivity:	Human, Mouse, Rat

Target Details

Target:	Lamin B1 (LMNB1)
Alternative Name:	Lamin-B1 (LMNB1) (LMNB1 Products)

Target Details

Gene ID:	4001
Pathways:	Apoptosis , Caspase Cascade in Apoptosis

Application Details

Application Notes:	Western Blot (1-2 µg/mL) Immunohistochemistry (Formalin/PFA-fixed paraffin-embedded sections) (0.5-1 µg/mL) Immunohistochemistry (Frozen sections) (0.5-1 µg/mL) Immunocytochemistry (0.5-1 µg/mL) The optimal working dilution should be determine
--------------------	---

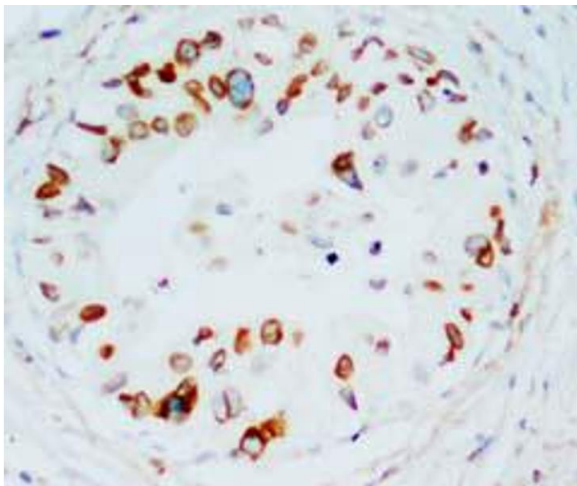
Restrictions:	For Research Use only
---------------	-----------------------

Handling

Format:	Lyophilized
Buffer:	Lyophilized from 0.9 mg NaCl, 0.2 mg Na ₂ HPO ₄ (5 mg BSA, 0.05 mg sodium azide, 0.05 mg Thimerosal)
Preservative:	Sodium azide, Thimerosal (Merthiolate)
Precaution of Use:	This product contains Thimerosal (Merthiolate) and Sodium azide: POISONOUS AND HAZARDOUS SUBSTANCES which should be handled by trained staff only.
Storage:	-20 °C
Storage Comment:	Store at -20°C on dry atmosphere. After reconstitution with 200 uL of deionized water and concentration will be 500 ug/mL, store at -20°C or lower. Aliquot to avoid repeated freezing and thawing.

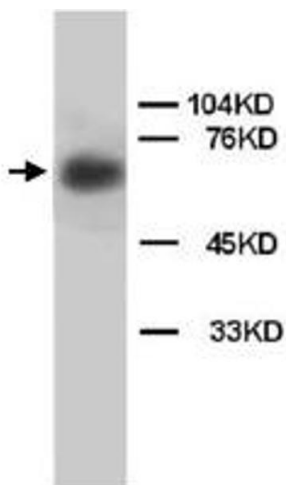
Publications

Product cited in:	Tsai, Wang, Heidinger, Shumaker, Adam, Goldman, Zheng: "A mitotic lamin B matrix induced by RanGTP required for spindle assembly." in: Science (New York, N.Y.) , Vol. 311, Issue 5769, pp. 1887-93, (2006) (PubMed).
-------------------	--



Immunohistochemistry

Image 1. Immunohistochemical staining of LMNB1 on formalin fixed, paraffin embedded human mammary cancer with LMNB1 polyclonal antibody .



Western Blotting

Image 2. Western Blot analysis of LMNB1 expression from rat brain tissue lyate with LMNB1 polyclonal antibody .