



[Go to Product page](#)

Datasheet for ABIN540629
anti-MAD2 antibody

1 Image

Overview

Quantity:	100 µL
Target:	MAD2
Reactivity:	Please inquire
Host:	Rabbit
Clonality:	Polyclonal
Conjugate:	This MAD2 antibody is un-conjugated
Application:	Western Blotting (WB), Immunofluorescence (IF)

Product Details

Purpose:	Rabbit polyclonal antibody raised against recombinant MAD2.
Immunogen:	Recombinant His6 fusion protein corresponding to Yeast MAD2.
Isotype:	IgG
Specificity:	Yeast Mad2p.

Target Details

Target:	MAD2
Abstract:	MAD2 Products

Application Details

Application Notes:	Western Blot (1:100)
--------------------	----------------------

Application Details

The optimal working dilution should be determined by the end user.

Restrictions: For Research Use only

Handling

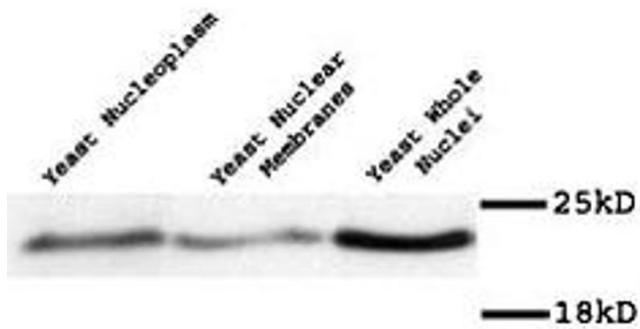
Format: Liquid

Buffer: In antiserum (0.09 % sodium azide)

Storage: 4 °C, -20 °C

Storage Comment: Store at 4°C. For long term storage store at -20°C.
Aliquot to avoid repeated freezing and thawing.

Images



Western Blotting

Image 1. Western blot of Mad2p polyclonal antibody on yeast preparation.