

Datasheet for ABIN540669

anti-Macrophage Scavenger Receptor 1 antibody (AA 300-400)[Go to Product page](#)**1** Image

Overview

Quantity:	100 µL
Target:	Macrophage Scavenger Receptor 1 (MSR1)
Binding Specificity:	AA 300-400
Reactivity:	Human, Mouse, Rat, Dog, Cow, Horse, Primate
Host:	Rabbit
Clonality:	Polyclonal
Conjugate:	This Macrophage Scavenger Receptor 1 antibody is un-conjugated
Application:	Western Blotting (WB), Immunofluorescence (IF), Immunocytochemistry (ICC)

Product Details

Purpose:	Rabbit polyclonal antibody raised against synthetic peptide of MSR1.
Immunogen:	A synthetic peptide (linear form) corresponding to amino acids 300-400 of human MSR1.
Cross-Reactivity:	Cow, Dog, Horse, Human, Mouse, Primate, Rat

Target Details

Target:	Macrophage Scavenger Receptor 1 (MSR1)
Alternative Name:	CD204 (MSR1 Products)
Gene ID:	4481

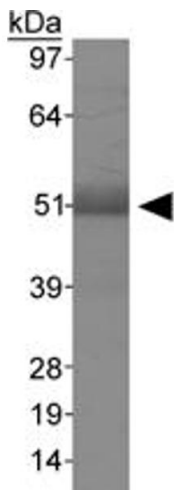
Application Details

Application Notes:	Immunocytochemistry (1:50-1:200) Immunofluorescence (1:50-1:200) Western Blot (0.5 µg/mL) The optimal working dilution should be determined by the end user.
Restrictions:	For Research Use only

Handling

Format:	Liquid
Buffer:	In PBS (30 % glycerol, 0.09 % sodium azide)
Preservative:	Sodium azide
Precaution of Use:	This product contains Sodium azide: a POISONOUS AND HAZARDOUS SUBSTANCE which should be handled by trained staff only.
Storage:	4 °C,-20 °C
Storage Comment:	Store at 4°C for short term. For long term storage store at -20°C. Aliquot to avoid repeated freezing and thawing.

Images



Western Blotting

Image 1. Western blot analysis of MSR1 in human liver using MSR1 polyclonal antibody .