

Datasheet for ABIN540687
anti-LRP8 antibody (AA 800-900)[Go to Product page](#)

1 Image

Overview

Quantity:	100 µL
Target:	LRP8
Binding Specificity:	AA 800-900
Reactivity:	Human, Mouse, Chicken, Cow
Host:	Rabbit
Clonality:	Polyclonal
Conjugate:	This LRP8 antibody is un-conjugated
Application:	Western Blotting (WB)

Product Details

Purpose:	Rabbit polyclonal antibody raised against synthetic peptide of LRP8.
Immunogen:	A synthetic peptide corresponding to amino acids 800-900 of human LRP8.
Specificity:	This antibody is specific to ApoER2.
Cross-Reactivity:	Chicken, Cow, Human, Mouse
Characteristics:	Antibody Reactive Against Synthetic Peptide.

Target Details

Target:	LRP8
Alternative Name:	APOER2/LRP8 (LRP8 Products)
Gene ID:	7804

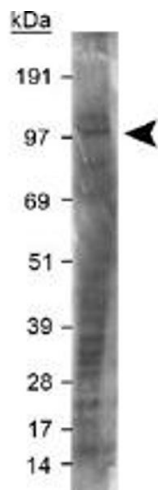
Application Details

Application Notes:	Western Blot (2 µg/mL) The optimal working dilution should be determined by the end user.
Restrictions:	For Research Use only

Handling

Format:	Liquid
Buffer:	In Tris-glycine, 150 mM NaCl (0.05 % sodium azide)
Preservative:	Sodium azide
Precaution of Use:	This product contains Sodium azide: a POISONOUS AND HAZARDOUS SUBSTANCE which should be handled by trained staff only.
Storage:	4 °C,-20 °C
Storage Comment:	Store at 4°C for short term. For long term storage store at -20°C. Aliquot to avoid repeated freezing and thawing.

Images



Western Blotting

Image 1. Western blot analysis of LRP8 in mouse brain membrane lysate using LRP8 polyclonal antibody .