

Datasheet for ABIN540689

anti-LPO antibody (AA 650-712)**1** Image**1** Publication[Go to Product page](#)

Overview

Quantity:	100 µL
Target:	LPO
Binding Specificity:	AA 650-712
Reactivity:	Cow, Human, Mouse, Goat, Sheep, Hamster
Host:	Rabbit
Clonality:	Polyclonal
Conjugate:	This LPO antibody is un-conjugated
Application:	Western Blotting (WB)

Product Details

Purpose:	Rabbit polyclonal antibody raised against synthetic peptide of LPO.
Immunogen:	A synthetic peptide corresponding to amino acids 650-712 of human LPO.
Cross-Reactivity:	Cow, Goat, Hamster, Human, Mouse, Sheep

Target Details

Target:	LPO
Alternative Name:	Lactoperoxidase (LPO Products)
Gene ID:	4025

Application Details

Application Notes:	Western Blot (0.5-2 µg/mL) The optimal working dilution should be determined by the end user.
Restrictions:	For Research Use only

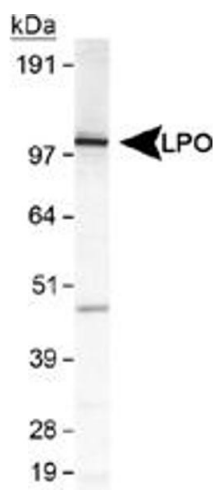
Handling

Format:	Liquid
Buffer:	In PBS (30 % glycerol, 0.09 % sodium azide)
Preservative:	Sodium azide
Precaution of Use:	This product contains Sodium azide: a POISONOUS AND HAZARDOUS SUBSTANCE which should be handled by trained staff only.
Storage:	4 °C,-20 °C
Storage Comment:	Store at 4°C for short term. For long term storage store at -20°C. Aliquot to avoid repeated freezing and thawing.

Publications

Product cited in:	Shin, Hayasawa, Lönnerdal: "Purification and quantification of lactoperoxidase in human milk with use of immunoadsorbents with antibodies against recombinant human lactoperoxidase." in: The American journal of clinical nutrition , Vol. 73, Issue 5, pp. 984-9, (2001) (PubMed).
-------------------	---

Images



Western Blotting

Image 1. Western blot analysis of LPO in MDA-MB-231 cell lysate using LPO polyclonal antibody .