



Datasheet for ABIN540757
anti-CDR2 antibody (C-Term)



[Go to Product page](#)

1 Image

Overview

Quantity:	100 µL
Target:	CDR2
Binding Specificity:	C-Term
Reactivity:	Human, Mouse, Cow, Monkey, Primate
Host:	Rabbit
Clonality:	Polyclonal
Conjugate:	This CDR2 antibody is un-conjugated
Application:	Immunohistochemistry (IHC), Western Blotting (WB)

Product Details

Purpose:	Rabbit polyclonal antibody raised against synthetic peptide of CDR2.
Immunogen:	A synthetic peptide corresponding to C-terminus of human CDR2.
Cross-Reactivity:	Cow, Human, Monkey, Mouse, Primate

Target Details

Target:	CDR2
Alternative Name:	CDR2 (CDR2 Products)
Gene ID:	1039

Application Details

Application Notes: Western Blot (2 µg/mL)
Immunohistochemistry (5-10 µg/mL)
The optimal working dilution should be determined by the end user.

Restrictions: For Research Use only

Handling

Format: Liquid

Buffer: In Tris-citrate/phosphate buffer, pH 7.0-8.0 (0.09 % sodium azide)

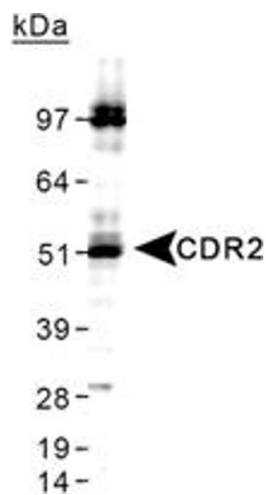
Preservative: Sodium azide

Precaution of Use: This product contains Sodium azide: a POISONOUS AND HAZARDOUS SUBSTANCE which should be handled by trained staff only.

Storage: 4 °C

Storage Comment: Store at 4°C. Do not freeze.

Images



Western Blotting

Image 1. Western blot analysis of CDR2 in HeLa whole cell lysate using CDR2 polyclonal antibody .