

Datasheet for ABIN540832

anti-FANCD2 antibody (pSer222)**2** Images**1** Publication[Go to Product page](#)

Overview

Quantity:	200 µL
Target:	FANCD2
Binding Specificity:	pSer222
Reactivity:	Human
Host:	Rabbit
Clonality:	Polyclonal
Conjugate:	This FANCD2 antibody is un-conjugated
Application:	Western Blotting (WB)

Product Details

Purpose:	Rabbit polyclonal antibody raised against synthetic phosphopeptide of FANCD2.
Immunogen:	Synthetic phosphopeptide corresponding to residues surrounding S222 of human FANCD2.
Specificity:	This antibody is specific to the phosphorylated form of FANCD2.
Cross-Reactivity:	Human
Characteristics:	Antibody Reactive Against Synthetic Peptide.

Target Details

Target:	FANCD2
Alternative Name:	FANCD2 (FANCD2 Products)
Gene ID:	2177

Target Details

Pathways: [DNA Damage Repair](#)

Application Details

Application Notes: The optimal working dilution should be determined by the end user.

Restrictions: For Research Use only

Handling

Format: Liquid

Buffer: No additive

Preservative: Without preservative

Storage: -20 °C,-80 °C

Storage Comment: Store at -20°C or -80°C.
Aliquot to avoid repeated freezing and thawing.

Publications

Product cited in: Taniguchi, Garcia-Higuera, Xu, Andreassen, Gregory, Kim, Lane, Kastan, DAndrea: "Convergence of the fanconi anemia and ataxia telangiectasia signaling pathways." in: **Cell**, Vol. 109, Issue 4, pp. 459-72, (2002) ([PubMed](#)).

Images

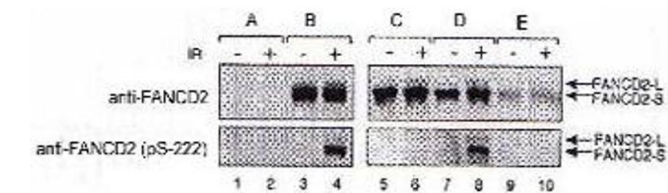


Image 1. FA-D2 fibroblasts were stably transfected with either pMMP (empty vector, A), FANCD2 (wt, B), FANCD2 (S222A, C), FANCD2 (triple mutant, D), or FANCD2 (quadruple mutant, E). Cells were irradiated with 15 Gy (+), and whole cell lysates were immunoblotted with either anti-FANCD2 or Phospho-FANCD2 S222 polyclonal antibody, .

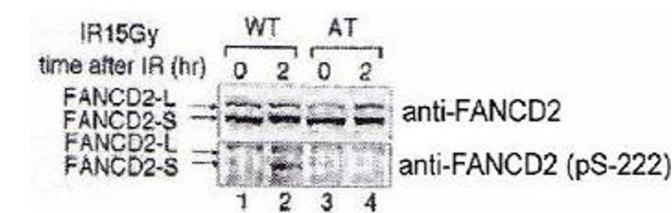


Image 2. Indicated lymphoblasts (PD7, WT : GM1526, AT) were irradiated with 15 Gy (2), and immunoblotted with anti-FANCD2 and FANCD2 (phospho S222) polyclonal antibody .