



[Go to Product page](#)

Datasheet for ABIN540853

anti-Humanin antibody (AA 9-24)

1 Image

1 Publication

Overview

Quantity:	100 µL
Target:	Humanin (MT-RNR2)
Binding Specificity:	AA 9-24
Reactivity:	Human
Host:	Rabbit
Clonality:	Polyclonal
Conjugate:	This Humanin antibody is un-conjugated
Application:	Western Blotting (WB)

Product Details

Purpose:	Rabbit polyclonal antibody raised against synthetic peptide of RNR2.
Immunogen:	A synthetic peptide corresponding to amino acids 9-24 of human RNR2.
Sequence:	LLLLTSEIDL PVKRRRA
Isotype:	IgG
Specificity:	This antibody is specific to humanin.
Cross-Reactivity:	Human
Characteristics:	Antibody Reactive Against Synthetic Peptide.

Target Details

Target:	Humanin (MT-RNR2)
---------	-------------------

Target Details

Alternative Name: Humanin ([MT-RNR2 Products](#))

Application Details

Application Notes: Western Blot (1:500)
The optimal working dilution should be determined by the end user.

Restrictions: For Research Use only

Handling

Format: Liquid

Buffer: In buffer containing 0.02 % sodium azide

Preservative: Sodium azide

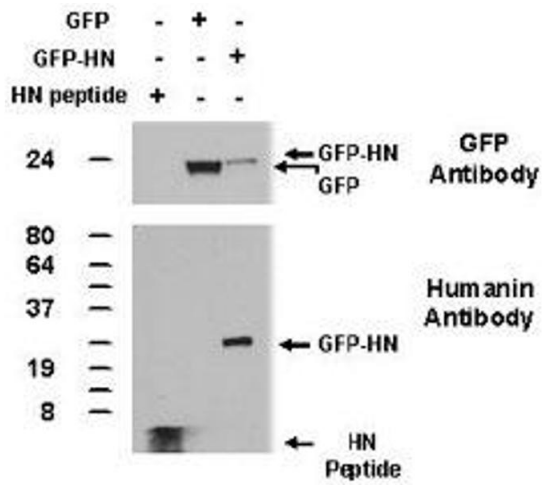
Precaution of Use: This product contains Sodium azide: a POISONOUS AND HAZARDOUS SUBSTANCE which should be handled by trained staff only.

Storage: 4 °C,-20 °C

Storage Comment: Store at 4°C for short term. For long term storage store at -20°C.
Aliquot to avoid repeated freezing and thawing.

Publications

Product cited in: Hashimoto, Wakabayashi, Watanabe, Kowa, Hosoda, Nakamura, Kanazawa, Arai, Takio, Mann, Iwatsubo: "CLAC: a novel Alzheimer amyloid plaque component derived from a transmembrane precursor, CLAC-P/collagen type XXV." in: **The EMBO journal**, Vol. 21, Issue 7, pp. 1524-34, (2002) ([PubMed](#)).



Western Blotting

Image 1. Western blot performed from 100ng of synthetic Humanin peptide and from 50 ug of total lysates of 293 cells transfected with plasmids encoding GFPc1 or GFP-Humanin using Humanin polyclonal antibody .