

Datasheet for ABIN540917  
**anti-MST1R antibody (pTyr1238, pTyr1239)**[Go to Product page](#)

## 2 Images

## Overview

Quantity:	100 µg
Target:	MST1R
Binding Specificity:	pTyr1238, pTyr1239
Reactivity:	Human, Mouse, Rat
Host:	Rabbit
Clonality:	Polyclonal
Conjugate:	This MST1R antibody is un-conjugated
Application:	Western Blotting (WB), ELISA, Immunohistochemistry (IHC), Immunoprecipitation (IP), Dot Blot (DB)

## Product Details

Purpose:	Rabbit polyclonal antibody raised against synthetic phosphopeptide of MST1R.
Immunogen:	Synthetic phosphopeptide corresponding to residues surrounding Y1238/Y1239 of human MST1R.
Specificity:	This antibody recognizes ~185 KDa of human MST1R.
Cross-Reactivity:	Human, Mouse, Rat
Characteristics:	Antibody Reactive Against Synthetic Peptide.

## Target Details

Target:	MST1R
---------	-------

## Target Details

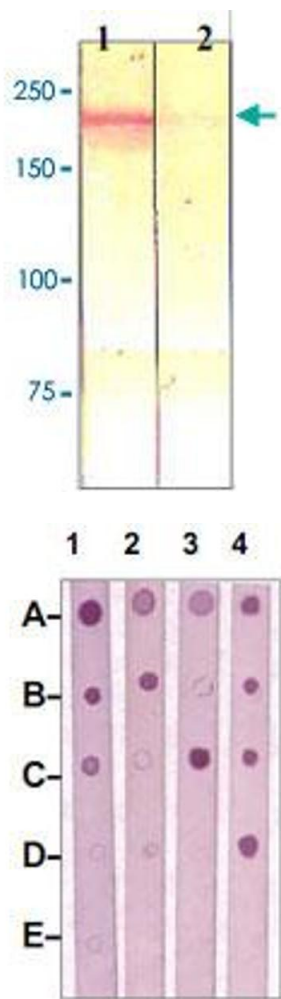
Alternative Name:	CD136 / MST1R ( <a href="#">MST1R Products</a> )
Gene ID:	4486
Pathways:	<a href="#">RTK Signaling</a>

## Application Details

Application Notes:	Western Blot (0.1-1 µg/mL) ELISA (0.01-0.1 µg/mL) Immunoprecipitation (2-5 µg/mL) Immunohistochemistry (2-5 µg/mL) The optimal working dilution should be determined by the end user.
Restrictions:	For Research Use only

## Handling

Format:	Liquid
Buffer:	In TBS, pH 7.2 (BSA, 10 % Proclin300)
Preservative:	ProClin
Precaution of Use:	This product contains ProClin: a POISONOUS AND HAZARDOUS SUBSTANCE which should be handled by trained staff only.
Storage:	4 °C,-20 °C
Storage Comment:	Store at 4°C. For long term storage store at -20°C or lower. Aliquot to avoid repeated freezing and thawing.



### Western Blotting

**Image 1.** The cell lysate derived from MSP-treated MST1R transfected HEK 293 were immunoprobed by MST1R (phospho Y1238/Y1239) polyclonal antibody at 1 : 500. An immunoreactive band is observed around ~185kDa (lane 1). This band is blocked by immunizing peptide (lane 2).

### Dot Blot

**Image 2.** Dot Blot : 1 ug peptide was blot onto NC membrane. A : MST1R (pY1238/Y1239). B : MST1R (pY1238). C : MST1R (pY1239). D : MST1R (Nonphospho). E : Non-related Phosphopeptide. Then were blotted at a 1 : 2000 dilution by : 1. MST1R (phospho Y1238/Y1239) polyclonal antibody . 2. MST1R (phospho Y1238) polyclonal antibody . 3. MST1R (phospho Y1239) polyclonal antibody . 4. MST1R polyclonal antibody .