



Datasheet for ABIN540940  
**anti-LSP1 antibody (pSer252)**



[Go to Product page](#)

1 Image

1 Publication

## Overview

Quantity:	100 µg
Target:	LSP1
Binding Specificity:	pSer252
Reactivity:	Human, Mouse
Host:	Rabbit
Clonality:	Polyclonal
Conjugate:	This LSP1 antibody is un-conjugated
Application:	Western Blotting (WB), ELISA, Immunohistochemistry (IHC), Immunoprecipitation (IP)

## Product Details

Purpose:	Rabbit polyclonal antibody raised against synthetic phosphopeptide of LSP1.
Immunogen:	Synthetic phosphopeptide corresponding to residues surrounding S252 of human LSP1.
Specificity:	This antibody recognizes ~52 kDa of human LSP1 at a phosphorylated serine 252. It does not recognize non-phosphorylated peptides confirmed by dot blot.
Cross-Reactivity:	Human, Mouse
Characteristics:	Antibody Reactive Against Synthetic Peptide.

## Target Details

Target:	LSP1
Alternative Name:	LSP1 / WP34 ( <a href="#">LSP1 Products</a> )

## Target Details

---

Gene ID: 4046

## Application Details

---

Application Notes: Western Blot (0.1-1 µg/mL)  
ELISA (0.01-0.1 µg/mL)  
Immunoprecipitation (2-5 µg/mL)  
Immunohistochemistry (2-5 µg/mL)  
The optimal working dilution should be determined by the end user.

Restrictions: For Research Use only

## Handling

---

Format: Liquid

Buffer: In TBS, pH 7.2 (BSA, 10 % Proclin300)

Preservative: ProClin

Precaution of Use: This product contains ProClin: a POISONOUS AND HAZARDOUS SUBSTANCE which should be handled by trained staff only.

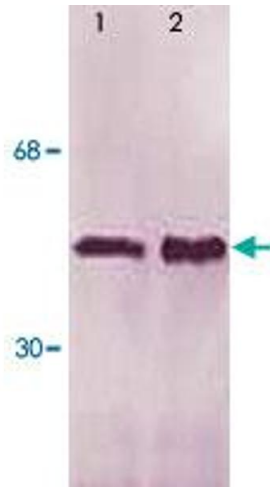
Storage: 4 °C, -20 °C, -80 °C

Storage Comment: Store at 4°C. For long term storage store at -20°C or -80°C.  
Aliquot to avoid repeated freezing and thawing.

## Publications

---

Product cited in: Liu, Cara, Kaur, Raharjo, Mullaly, Jongstra-Bilen, Jongstra, Kubes: "LSP1 is an endothelial gatekeeper of leukocyte transendothelial migration." in: **The Journal of experimental medicine**, Vol. 201, Issue 3, pp. 409-18, (2005) ([PubMed](#)).



### Western Blotting

**Image 1.** The whole cell lysate derived from m-CSF stimulated Jurket cells (Lane 1) or mouse spleen (Lane 2) were immune-probed by LSP1 (phospho S252) polyclonal antibody at 1 : 500. An immunoreactive band is observed around ~ 52 KDa.