

Datasheet for ABIN540941
anti-MAP2K5 antibody (pSer311, pThr315)[Go to Product page](#)

2 Images

1 Publication

Overview

Quantity:	100 µg
Target:	MAP2K5
Binding Specificity:	pSer311, pThr315
Reactivity:	Human, Mouse, Rat, Dog, Chicken
Host:	Rabbit
Clonality:	Polyclonal
Conjugate:	This MAP2K5 antibody is un-conjugated
Application:	Western Blotting (WB), ELISA, Immunohistochemistry (IHC), Immunoprecipitation (IP), Dot Blot (DB)

Product Details

Purpose:	Rabbit polyclonal antibody raised against synthetic phosphopeptide of MAP2K5.
Immunogen:	Synthetic phosphopeptide corresponding to residues surrounding S311/T315 of human MAP2K5.
Sequence:	SIAKT
Specificity:	This antibody recognizes ~49 KDa of human MAP2K5 at the phosphorylation site of Ser 311/Thr315. It does not cross react to non-phospho MEK5.
Cross-Reactivity:	Chicken, Dog, Human, Mouse, Rat
Characteristics:	Antibody Reactive Against Synthetic Peptide.

Target Details

Target:	MAP2K5
Alternative Name:	MAP2K5 (MAP2K5 Products)
Gene ID:	5607
Pathways:	MAPK Signaling , Neurotrophin Signaling Pathway

Application Details

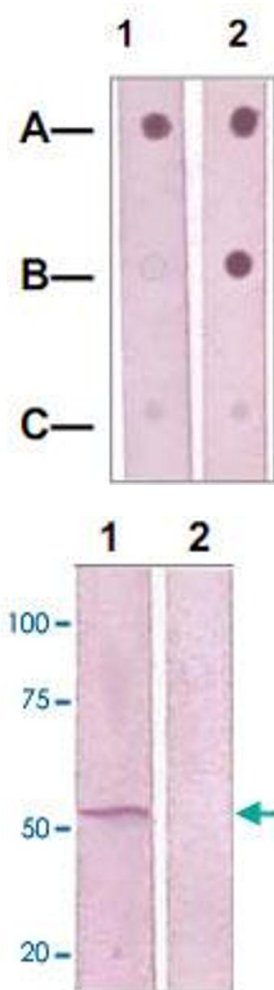
Application Notes:	Western Blot (0.1-1 µg/mL) ELISA (0.01-0.1 µg/mL) Immunoprecipitation (2-5 µg/mL) Immunohistochemistry (2-5 µg/mL) The optimal working dilution should be determined by the end user.
Restrictions:	For Research Use only

Handling

Format:	Liquid
Buffer:	In TBS, pH 7.2 (BSA, 10 % Proclin300)
Preservative:	ProClin
Precaution of Use:	This product contains ProClin: a POISONOUS AND HAZARDOUS SUBSTANCE which should be handled by trained staff only.
Storage:	4 °C,-20 °C,-80 °C
Storage Comment:	Store at 4°C. For long term storage store at -20°C to -80°C. Aliquot to avoid repeated freezing and thawing.

Publications

Product cited in:	Shishido, Woo, Ding, McClain, Molina, Yan, Yang, Abe: "Effects of MEK5/ERK5 association on small ubiquitin-related modification of ERK5: implications for diabetic ventricular dysfunction after myocardial infarction." in: Circulation research , Vol. 102, Issue 11, pp. 1416-25, (2008) (PubMed).
-------------------	--



Dot Blot

Image 1. Dot Blot : 1 ug peptide was blot onto NC membrane. A : MAP2K5 (pS311/pT315). B : MAP2K5 (Non-phospho). C : Non-related phospho-specific. Followed were blotted at a 1 : 1000 dilution by : 1. MAP2K5 (phospho S311/T315) polyclonal antibody . 2 : MAP2K5 polyclonal antibody .

Western Blotting

Image 2. The whole cell lysates derived from EGF-stimulated A-431 were immunoblotted by MAP2K5 (phospho S311/T315) polyclonal antibody at 1 : 1000 (Lane 1). The lane 2 was pre-absorbed by immunizing peptide.