

Datasheet for ABIN540944

**anti-Neurofibromin 1 antibody (pSer2741)****2** Images**1** Publication[Go to Product page](#)

## Overview

Quantity:	100 µg
Target:	Neurofibromin 1 (NF1)
Binding Specificity:	pSer2741
Reactivity:	Human, Mouse, Rat, Cow, Dog
Host:	Rabbit
Clonality:	Polyclonal
Conjugate:	This Neurofibromin 1 antibody is un-conjugated
Application:	ELISA, Western Blotting (WB), Immunoprecipitation (IP), Dot Blot (DB)

## Product Details

Purpose:	Rabbit polyclonal antibody raised against synthetic phosphopeptide of NF1.
Immunogen:	Synthetic phosphopeptide corresponding to residues surrounding S2741 of human NF1.
Sequence:	PTSPY
Specificity:	This antibody recognizes ~240 kDa of human NF1 at the phosphorylation site of Ser 2741. It does not cross react to non-phospho NF1.
Cross-Reactivity:	Cow, Dog, Human, Mouse, Rat
Characteristics:	Antibody Reactive Against Synthetic Peptide.

## Target Details

Target:	Neurofibromin 1 (NF1)
---------	-----------------------

## Target Details

Alternative Name:	Neurofibromin ( <a href="#">NF1 Products</a> )
Gene ID:	4763
Pathways:	<a href="#">cAMP Metabolic Process</a> , <a href="#">Regulation of long-term Neuronal Synaptic Plasticity</a>

## Application Details

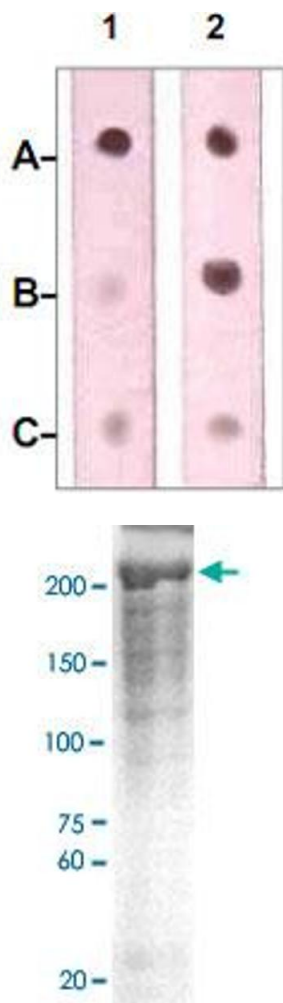
Application Notes:	Western Blot (0.1-1 µg/mL) ELISA (0.01-0.1 µg/mL) Immunoprecipitation (2-5 µg/mL) The optimal working dilution should be determined by the end user.
Restrictions:	For Research Use only

## Handling

Format:	Liquid
Buffer:	In TBS, pH 7.2 (BSA, 10 % Proclin300)
Preservative:	ProClin
Precaution of Use:	This product contains ProClin: a POISONOUS AND HAZARDOUS SUBSTANCE which should be handled by trained staff only.
Storage:	4 °C, -20 °C
Storage Comment:	Store at 4°C. For long term storage store at -20°C or lower. Aliquot to avoid repeated freezing and thawing.

## Publications

Product cited in:	Tokuo, Yunoue, Feng, Kimoto, Tsuji, Ono, Saya, Araki: "Phosphorylation of neurofibromin by cAMP-dependent protein kinase is regulated via a cellular association of N(G),N(G)-dimethylarginine dimethylaminohydrolase." in: <b>FEBS letters</b> , Vol. 494, Issue 1-2, pp. 48-53, (2001) ( <a href="#">PubMed</a> ).
-------------------	--



**Dot Blot**

**Image 1.** Dot Blot : 1 ug peptide was blot onto NC membrane. A : NF1 (pS2741). B : NF1 (Non-phospho). C : Non-related phospho-specific phosphopeptide. Followed were blotted at a 1 : 1000 dilution by : 1. NF1 (phospho S2741) polyclonal antibody . 2. NF1 polyclonal antibody .

**Western Blotting**

**Image 2.** The tissue lysates derived from hypoxic mouse brain were immunoblotted by NF1 (phospho S2741) polyclonal antibody at 1 : 1000.