

Datasheet for ABIN540951
anti-ROCK2 antibody (pThr396)[Go to Product page](#)

1 Image

1 Publication

Overview

Quantity:	100 µg
Target:	ROCK2
Binding Specificity:	pThr396
Reactivity:	Human, Mouse, Rat, Cow, Dog, Chicken
Host:	Rabbit
Clonality:	Polyclonal
Conjugate:	This ROCK2 antibody is un-conjugated
Application:	Western Blotting (WB), ELISA, Immunohistochemistry (IHC), Immunoprecipitation (IP)

Product Details

Purpose:	Rabbit polyclonal antibody raised against synthetic phosphopeptide of ROCK2.
Immunogen:	Synthetic phosphopeptide corresponding to residues surrounding T396 of human ROCK2.
Sequence:	VETFP
Specificity:	This antibody recognizes ~165 kDa of human ROCK2 at a phosphorylation site of Thr396. It does not react to non-phosphorylated protein.
Cross-Reactivity:	Chicken, Cow, Dog, Human, Mouse, Rat
Characteristics:	Antibody Reactive Against Synthetic Peptide.

Target Details

Target:	ROCK2
---------	-------

Target Details

Alternative Name:	ROCK2 (ROCK2 Products)
Gene ID:	9475
Pathways:	Microtubule Dynamics , WNT Signaling , Tube Formation

Application Details

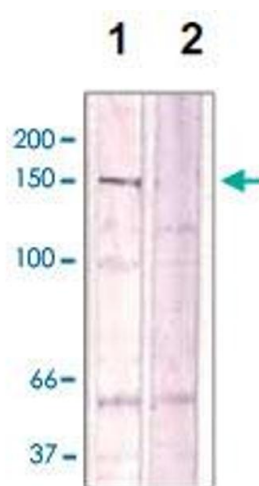
Application Notes:	Western Blot (0.1-1 µg/mL) ELISA (0.01-0.1 µg/mL) Immunoprecipitation (2-5 µg/mL) Immunohistochemistry (0.5-2 µg/mL) The optimal working dilution should be determined by the end user.
Restrictions:	For Research Use only

Handling

Format:	Liquid
Buffer:	In TBS, pH 7.2 (BSA, 10 % Proclin300)
Preservative:	ProClin
Precaution of Use:	This product contains ProClin: a POISONOUS AND HAZARDOUS SUBSTANCE which should be handled by trained staff only.
Storage:	4 °C,-20 °C
Storage Comment:	Store at 4°C. For long term storage store at -20°C or lower. Aliquot to avoid repeated freezing and thawing.

Publications

Product cited in:	Vahebi, Kobayashi, Warren, de Tombe, Solaro: "Functional effects of rho-kinase-dependent phosphorylation of specific sites on cardiac troponin." in: Circulation research , Vol. 96, Issue 7, pp. 740-7, (2005) (PubMed).
-------------------	--



Western Blotting

Image 1. The cell lysate derived from Conditioned NIH/3T3 cell was immunoprecipitated by ROCK2 (phospho T396) polyclonal antibody , then immunoprobed by the same antibody at 1 : 500 (lane 1). Lane 2 is a negative control.