

Datasheet for ABIN540955

## anti-VEGFR2/CD309 antibody (Extracellular Domain)



[Go to Product page](#)

2 Images

3 Publications

### Overview

Quantity:	100 µg
Target:	VEGFR2/CD309 (VEGFR2)
Binding Specificity:	Extracellular Domain
Reactivity:	Human, Mouse, Dog
Host:	Rabbit
Clonality:	Polyclonal
Conjugate:	This VEGFR2/CD309 antibody is un-conjugated
Application:	Western Blotting (WB), ELISA, Immunohistochemistry (Paraffin-embedded Sections) (IHC (p)), Immunoprecipitation (IP)

### Product Details

Purpose:	Rabbit polyclonal antibody raised against synthetic peptide of KDR.
Immunogen:	A synthetic peptide corresponding to extracellular domain of human KDR.
Specificity:	This antibody recognizes ~200 and ~240 KDa of human KDR.
Cross-Reactivity:	Dog, Human, Mouse
Characteristics:	Antibody Reactive Against Synthetic Peptide.

### Target Details

Target:	VEGFR2/CD309 (VEGFR2)
Alternative Name:	CD309 / VEGFR-2 / Flk-1 ( <a href="#">VEGFR2 Products</a> )

## Target Details

---

Gene ID: 3791

---

Pathways: [RTK Signaling](#), [Glycosaminoglycan Metabolic Process](#), [Signaling Events mediated by VEGFR1 and VEGFR2](#), [Growth Factor Binding](#), [Regulation of long-term Neuronal Synaptic Plasticity](#), [VEGF Signaling](#)

---

## Application Details

---

Application Notes: Western Blot (0.1-1 µg/mL)  
ELISA (0.01-0.1 µg/mL)  
Immunoprecipitation (2-5 µg/mL)  
Immunohistochemistry (2-5 µg/mL)  
The optimal working dilution should be determined by the end user.

---

Restrictions: For Research Use only

---

## Handling

---

Format: Liquid

---

Buffer: In TBS, pH 7.2 (BSA, 10 % Proclin300)

---

Preservative: ProClin

---

Precaution of Use: This product contains ProClin: a POISONOUS AND HAZARDOUS SUBSTANCE which should be handled by trained staff only.

---

Storage: 4 °C, -20 °C

---

Storage Comment: Store at 4°C. For long term storage store at -20°C or lower.  
Aliquot to avoid repeated freezing and thawing.

---

## Publications

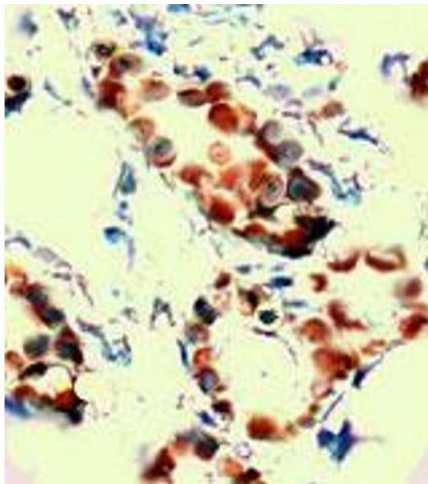
---

Product cited in: Liu, Chen, Chau, Jan, Chen, Hsu, Lin, Juang, Lu, Cheng, Chen, Chang, Ting, Kao, Hsiao, Huang: "Analysis of protein-protein interactions in cross-talk pathways reveals CRKL protein as a novel prognostic marker in hepatocellular carcinoma." in: **Molecular & cellular proteomics : MCP**, Vol. 12, Issue 5, pp. 1335-49, (2013) ([PubMed](#)).

Singh, Tiem, Watkins, Cho, Wang, Olsen, Uehara, Mamalis, Luo, Oakey, Ambati: "Soluble vascular endothelial growth factor receptor 3 is essential for corneal alymphaticity." in: **Blood**, Vol. 121, Issue 20, pp. 4242-9, (2013) ([PubMed](#)).

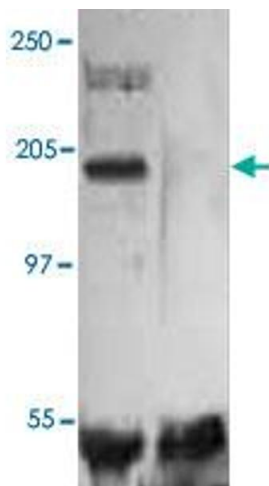
Matsumoto, Bohman, Dixelius, Berge, Dimberg, Magnusson, Wang, Wikner, Qi, Wernstedt, Wu, Bruheim, Mugishima, Mukhopadhyay, Spurkland, Claesson-Welsh: "VEGF receptor-2 Y951 signaling and a role for the adapter molecule TSA1 in tumor angiogenesis." in: **The EMBO journal**, Vol. 24, Issue 13, pp. 2342-53, (2005) ([PubMed](#)).

Images



Immunohistochemistry

**Image 1.** Immunohistochemical staining of human breast cancer tissue was stained with KDR polyclonal antibody at 1 : 100 for 10 min at RT. Staining of formalin-fixed tissue requires boiling tissue sections in 10 mM Citrate Buffer, pH 6.0 for 10 min followed by cooling at RT for 20 min.



Western Blotting

**Image 2.** The whole cell lysate derived from human umbilical vein endothelial cell (HUVEC) was stimulated by VEGF-A for 20 min, then immunoprecipitated by KDR polyclonal antibody followed by immune-probing with KDR polyclonal antibody at 1 : 500. The immunoreactive bands are observed around ~ 200 KDa (non-phospho form) and ~ 240 KDa (Phospho-form, lane 1). The lane 2 is a negative control.