

Datasheet for ABIN540993
anti-ESR2 antibody (C-Term)[Go to Product page](#)

2 Images

1 Publication

Overview

Quantity:	100 µg
Target:	ESR2
Binding Specificity:	C-Term
Reactivity:	Human, Mouse, Rat
Host:	Rabbit
Clonality:	Polyclonal
Conjugate:	This ESR2 antibody is un-conjugated
Application:	Western Blotting (WB), ELISA, Immunohistochemistry (Paraffin-embedded Sections) (IHC (p)), Immunoprecipitation (IP)

Product Details

Purpose:	Rabbit polyclonal antibody raised against synthetic peptide of ESR2.
Immunogen:	A synthetic peptide corresponding to C-terminus of human ESR2.
Specificity:	This antibody recognizes ~53 kDa of human ESR2.
Cross-Reactivity:	Human, Mouse, Rat
Characteristics:	Antibody Reactive Against Synthetic Peptide.

Target Details

Target:	ESR2
Alternative Name:	Estrogen receptor beta (ESR2 Products)

Target Details

Gene ID: 2100

Pathways: [Nuclear Receptor Transcription Pathway](#), [EGFR Signaling Pathway](#), [Intracellular Steroid Hormone Receptor Signaling Pathway](#), [Steroid Hormone Mediated Signaling Pathway](#), [Regulation of Intracellular Steroid Hormone Receptor Signaling](#)

Application Details

Application Notes: Western Blot (0.1-1 µg/mL)
ELISA (0.01-0.1 µg/mL)
Immunoprecipitation (2-5 µg/mL)
Immunohistochemistry (1:200)
The optimal working dilution should be determined by the end user.

Restrictions: For Research Use only

Handling

Format: Liquid

Buffer: In TBS, pH 7.2 (BSA, 10 % Proclin300)

Preservative: ProClin

Precaution of Use: This product contains ProClin: a POISONOUS AND HAZARDOUS SUBSTANCE which should be handled by trained staff only.

Storage: 4 °C, -20 °C, -80 °C

Storage Comment: Store at 4°C. For long term storage store at -20°C or -80°C.
Aliquot to avoid repeated freezing and thawing.

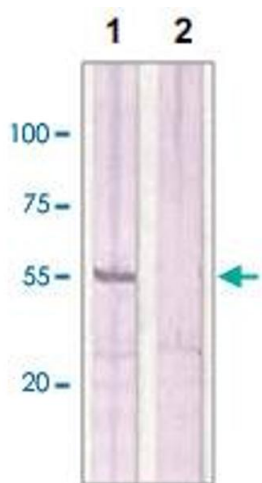
Publications

Product cited in: Weihua, Saji, Mäkinen, Cheng, Jensen, Warner, Gustafsson: "Estrogen receptor (ER) beta, a modulator of ERalpha in the uterus." in: **Proceedings of the National Academy of Sciences of the United States of America**, Vol. 97, Issue 11, pp. 5936-41, (2000) ([PubMed](#)).



Immunohistochemistry

Image 1. Immunohistochemical staining of human breast cancer tissue stained with ESR2 polyclonal antibody at 1 : 200 for 10 min at RT. Staining of formalin-fixed tissue requires boiling tissue sections in 10 mM Citrate Buffer, pH 6.0 for 10 min followed by cooling at RT for 20 min.



Western Blotting

Image 2. The whole cell lysates derived from MCF-7 were immunoblotted by ESR2 polyclonal antibody at 1 : 500 (Lane 1). The immunoreactive band is blocked by pre-incubation of immunizing peptide (Lane 2).