



[Go to Product page](#)

Datasheet for ABIN541003

anti-Histone Cluster 2, H3c (HIST2H3C) (N-Term) antibody

1 Image

2 Publications

Overview

Quantity:	100 µg
Target:	Histone Cluster 2, H3c (HIST2H3C)
Binding Specificity:	N-Term
Reactivity:	Human
Host:	Rabbit
Clonality:	Polyclonal
Application:	ELISA, Western Blotting (WB), Immunohistochemistry (IHC), Immunoprecipitation (IP)

Product Details

Purpose:	Rabbit polyclonal antibody raised against synthetic peptide of HIST2H3C.
Immunogen:	A synthetic peptide corresponding to N-terminus of human HIST2H3C.
Isotype:	IgG
Specificity:	This antibody only recognizes ~ 17 KDa of HIST2H3C.
Cross-Reactivity:	Chicken, Cow, Human, Mouse, Rat
Characteristics:	Antibody Reactive Against Synthetic Peptide.

Target Details

Target:	Histone Cluster 2, H3c (HIST2H3C)
Alternative Name:	HIST2H3C (HIST2H3C Products)
Gene ID:	126961

Application Details

Application Notes: Western Blot (0.1-1 µg/mL)
ELISA (0.01-0.1 µg/mL)
Immunoprecipitation (2-5 µg/mL)
Immunohistochemistry (1:100)
The optimal working dilution should be determined by the end user.

Restrictions: For Research Use only

Handling

Format: Liquid

Buffer: In TBS, pH 7.2 (BSA, 10 % Proclin300)

Preservative: ProClin

Precaution of Use: This product contains ProClin: a POISONOUS AND HAZARDOUS SUBSTANCE which should be handled by trained staff only.

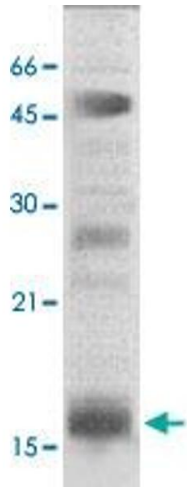
Storage: 4 °C,-20 °C

Storage Comment: Store at 4°C. For long term storage store at -20°C or lower.
Aliquot to avoid repeated freezing and thawing.

Publications

Product cited in: Seward, Cubberley, Kim, Schonewald, Zhang, Tripet, Bentley: "Demethylation of trimethylated histone H3 Lys4 in vivo by JARID1 JmjC proteins." in: **Nature structural & molecular biology**, Vol. 14, Issue 3, pp. 240-2, (2007) ([PubMed](#)).

Vakoc, Mandat, Olenchock, Blobel: "Histone H3 lysine 9 methylation and HP1gamma are associated with transcription elongation through mammalian chromatin." in: **Molecular cell**, Vol. 19, Issue 3, pp. 381-91, (2005) ([PubMed](#)).



Western Blotting

Image 1. The nuclear extract derived from HeLa were immunoprecipitated by 4 ug of HIST2H3C polyclonal antibody , then probed with HIST2H3C polyclonal antibody at 1 : 1000. An immunoreactive band at ~17 KDa is observed. Note : ~50 KDa and ~22 KDa are the rabbit immunoglobulin heavy and light chains.