

Datasheet for ABIN541013

anti-LRP6 antibody[1 Image](#)[1 Publication](#)[Go to Product page](#)

Overview

| | |
|--------------|--|
| Quantity: | 100 µg |
| Target: | LRP6 |
| Reactivity: | Human, Mouse, Rat, Cow |
| Host: | Rabbit |
| Clonality: | Polyclonal |
| Conjugate: | This LRP6 antibody is un-conjugated |
| Application: | Western Blotting (WB), ELISA, Immunoprecipitation (IP) |

Product Details

| | |
|-------------------|---|
| Purpose: | Rabbit polyclonal antibody raised against synthetic peptide of LRP6. |
| Immunogen: | A synthetic peptide corresponding to amino acids (KGTYP) of human LRP6. |
| Isotype: | IgG |
| Specificity: | This antibody recognizes ~180 KDa of human LRP6. |
| Cross-Reactivity: | Cow, Human, Mouse, Rat |

Target Details

| | |
|-------------------|--|
| Target: | LRP6 |
| Alternative Name: | LRP6 (LRP6 Products) |
| Gene ID: | 4040 |
| Pathways: | WNT Signaling , Tube Formation |

Application Details

| | |
|--------------------|---|
| Application Notes: | Western Blot (0.1-1 µg/mL) ELISA (0.01-0.1 µg/mL) Immunoprecipitation (2-5 µg/mL) The optimal working dilution should be determined by the end user. |
|--------------------|---|

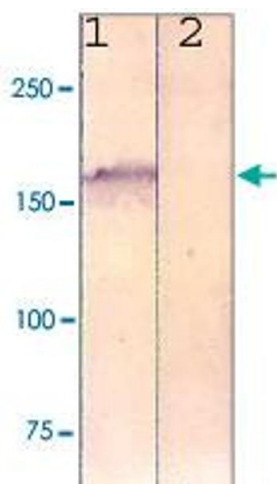
| | |
|---------------|-----------------------|
| Restrictions: | For Research Use only |
|---------------|-----------------------|

Handling

| | |
|--------------------|---|
| Format: | Liquid |
| Buffer: | In TBS, pH 7.2 (BSA, 10 % Proclin300) |
| Preservative: | ProClin |
| Precaution of Use: | This product contains ProClin: a POISONOUS AND HAZARDOUS SUBSTANCE which should be handled by trained staff only. |
| Storage: | 4 °C, -20 °C, -80 °C |
| Storage Comment: | Store at 4°C. For long term storage store at -20°C or -80°C. Aliquot to avoid repeated freezing and thawing. |

Publications

| | |
|-------------------|---|
| Product cited in: | Khan, Vijayakumar, de la Torre, Rotolo, Bafico: "Analysis of endogenous LRP6 function reveals a novel feedback mechanism by which Wnt negatively regulates its receptor." in: Molecular and cellular biology , Vol. 27, Issue 20, pp. 7291-301, (2007) (PubMed). |
|-------------------|---|



Western Blotting

Image 1. The cell lysate derived from NIH/3T3 was immunoprobed by LRP6 polyclonal antibody at 1 : 500. An immunoreactive band is observed around ~180kDa (1). This band is abolished by pre-incubation with immunizing peptide (2).