

Datasheet for ABIN541031

anti-Neurofibromin 1 antibody (C-Term)[1 Image](#)[1 Publication](#)[Go to Product page](#)

Overview

Quantity:	100 µg
Target:	Neurofibromin 1 (NF1)
Binding Specificity:	C-Term
Reactivity:	Human, Mouse, Rat, Cow, Dog
Host:	Rabbit
Clonality:	Polyclonal
Conjugate:	This Neurofibromin 1 antibody is un-conjugated
Application:	ELISA, Western Blotting (WB), Immunoprecipitation (IP)

Product Details

Purpose:	Rabbit polyclonal antibody raised against synthetic peptide of NF1.
Immunogen:	A synthetic peptide corresponding to C-terminus of human NF1.
Specificity:	This antibody recognizes ~240 KDa of human NF1.
Cross-Reactivity:	Cow, Dog, Human, Mouse, Rat
Characteristics:	Antibody Reactive Against Synthetic Peptide.

Target Details

Target:	Neurofibromin 1 (NF1)
Alternative Name:	Neurofibromin (NF1 Products)
Gene ID:	4763

Target Details

Pathways: [cAMP Metabolic Process](#), [Regulation of long-term Neuronal Synaptic Plasticity](#)

Application Details

Application Notes: Western Blot (0.1-1 µg/mL)
ELISA (0.01-0.1 µg/mL)
Immunoprecipitation (2-5 µg/mL)
The optimal working dilution should be determined by the end user.

Restrictions: For Research Use only

Handling

Format: Liquid

Buffer: In TBS, pH 7.2 (BSA, 10 % Proclin300)

Preservative: ProClin

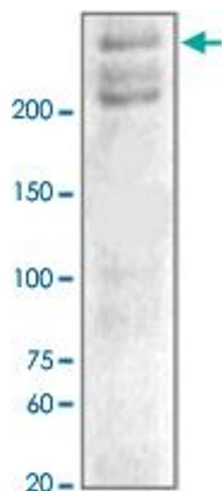
Precaution of Use: This product contains ProClin: a POISONOUS AND HAZARDOUS SUBSTANCE which should be handled by trained staff only.

Storage: 4 °C,-20 °C

Storage Comment: Store at 4°C. For long term storage store at -20°C or lower.
Aliquot to avoid repeated freezing and thawing.

Publications

Product cited in: Tokuo, Yunoue, Feng, Kimoto, Tsuji, Ono, Saya, Araki: "Phosphorylation of neurofibromin by cAMP-dependent protein kinase is regulated via a cellular association of N(G),N(G)-dimethylarginine dimethylaminohydrolase." in: **FEBS letters**, Vol. 494, Issue 1-2, pp. 48-53, (2001) ([PubMed](#)).



Western Blotting

Image 1. The tissue lysates derived from hypoxic mouse brain were immunoblotted by NF1 polyclonal antibody at 1 : 1000.