



[Go to Product page](#)

Datasheet for ABIN541041

anti-Rho-related GTP-binding protein antibody (C-Term)

1 Image

1 Publication

Overview

Quantity:	100 µg
Target:	Rho-related GTP-binding protein (Rho (pan))
Binding Specificity:	C-Term
Reactivity:	Human, Mouse, Rat
Host:	Rabbit
Clonality:	Polyclonal
Conjugate:	This Rho-related GTP-binding protein antibody is un-conjugated
Application:	ELISA, Western Blotting (WB), Immunohistochemistry (IHC), Immunoprecipitation (IP)

Product Details

Purpose:	Rabbit polyclonal antibody raised against synthetic peptide of RHO.
Immunogen:	A synthetic peptide corresponding to C-terminus of human RHO.
Isotype:	IgG
Specificity:	This antibody recognizes ~24 KDa of human RHO.
Cross-Reactivity:	Human, Mouse, Rat

Target Details

Target:	Rho-related GTP-binding protein (Rho (pan))
Alternative Name:	RHO (Rho (pan) Products)
Gene ID:	6010

Application Details

Application Notes: Western Blot (0.1-1 µg/mL)
ELISA (0.01-0.1 µg/mL)
Immunoprecipitation (2-5 µg/mL)
Immunohistochemistry (2-5 µg/mL)
The optimal working dilution should be determined by the end user.

Restrictions: For Research Use only

Handling

Format: Liquid

Buffer: In PBS, pH 7.2 (BSA, 10 % Proclin300)

Preservative: ProClin

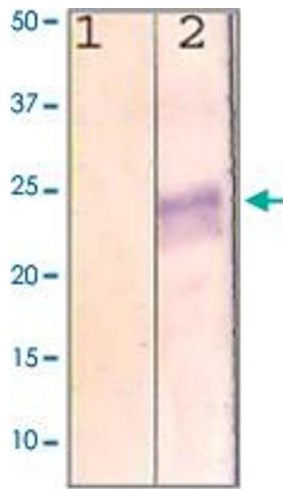
Precaution of Use: This product contains ProClin: a POISONOUS AND HAZARDOUS SUBSTANCE which should be handled by trained staff only.

Storage: 4 °C,-20 °C,-80 °C

Storage Comment: Store at 4°C. For long term storage store at -20°C or -80°C.
Aliquot to avoid repeated freezing and thawing.

Publications

Product cited in: Zavzavadjian, Couture, Park, Whalen, Lyon, Lee, Fung, Mi, Liu, Wall, Santat, Dhandapani, Kivork, Driver, Zhu, Chang, Randhawa, Gehrig, Bryan, Verghese, Maer, Saunders, Ning, Subramaniam, Meyer, Simon et al.: "The alliance for cellular signaling plasmid collection: a flexible resource for protein localization studies and signaling pathway analysis. ..." in: **Molecular & cellular proteomics : MCP**, Vol. 6, Issue 3, pp. 413-24, (2007) ([PubMed](#)).



Western Blotting

Image 1. The cell lysate derived from MCF-7 was immunoprobed by RHO polyclonal antibody at 1 : 500. An immunoreactive band is observed around ~24 kDa (2). This band is abolished by pre-incubation with immunizing peptide (1).