

Datasheet for ABIN541052
anti-SOX9 antibody (Ser181)[Go to Product page](#)

2 Images

1 Publication

Overview

Quantity:	100 µg
Target:	SOX9
Binding Specificity:	Ser181
Reactivity:	Human, Mouse, Rat, Dog, Cow, Chicken
Host:	Rabbit
Clonality:	Polyclonal
Conjugate:	This SOX9 antibody is un-conjugated
Application:	Western Blotting (WB), ELISA, Immunohistochemistry (IHC), Immunoprecipitation (IP), Dot Blot (DB)

Product Details

Purpose:	Rabbit polyclonal antibody raised against synthetic peptide of SOX9.
Immunogen:	A synthetic peptide corresponding to residues surrounding S181 (RKSVK) of human SOX9.
Specificity:	This antibody recognizes ~56 kDa of human SOX9 without phosphorylation at S181. It does not recognize the phosphorylation protein at Ser 181.
Cross-Reactivity:	Chicken, Cow, Dog, Human, Mouse, Rat
Characteristics:	Antibody Reactive Against Synthetic Peptide.

Target Details

Target:	SOX9
---------	------

Target Details

Alternative Name:	SOX9 (SOX9 Products)
Gene ID:	6662
Pathways:	EGFR Signaling Pathway , Stem Cell Maintenance , Regulation of Muscle Cell Differentiation , Tube Formation , Skeletal Muscle Fiber Development

Application Details

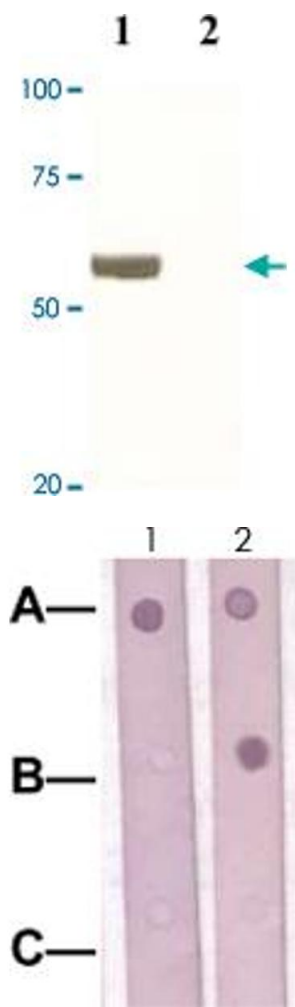
Application Notes:	Western Blot (0.1-1 µg/mL) ELISA (0.01-0.1 µg/mL) Immunoprecipitation (2-5 µg/mL) Immunohistochemistry (2-5 µg/mL) The optimal working dilution should be determined by the end user.
Restrictions:	For Research Use only

Handling

Format:	Liquid
Buffer:	In TBS, pH 7.2 (BSA, 10 % Proclin300)
Preservative:	ProClin
Precaution of Use:	This product contains ProClin: a POISONOUS AND HAZARDOUS SUBSTANCE which should be handled by trained staff only.
Storage:	4 °C,-20 °C
Storage Comment:	Store at 4°C. For long term storage store at -20°C or lower. Aliquot to avoid repeated freezing and thawing.

Publications

Product cited in:	Wang, McKnight, Zhang, Lu, Balk, Yuan: "SOX9 is expressed in normal prostate basal cells and regulates androgen receptor expression in prostate cancer cells." in: Cancer research , Vol. 67, Issue 2, pp. 528-36, (2007) (PubMed).
-------------------	--



Western Blotting

Image 1. The whole cell lysate derived from LNCaP prostate Carcinoma were immunoblotted SOX9 polyclonal antibody at 1 : 500 (Lane 1). Lane 2 is a negative control.

Dot Blot

Image 2. Dot Blot : 1 ug peptide was blot onto NC membrane. A : SOX9 (pS181) B : SOX9 (Paired S181) (Nonphospho) C : Non-related phosphospecific peptide were blotted at a 1 : 1000 dilution by : 1 : Phospho-SOX9 S181 polyclonal antibody ; 2 : SOX9 polyclonal antibody .