

Datasheet for ABIN541072

anti-STAT4 antibody (pTyr693)

2 Images

1 Publication

[Go to Product page](#)

Overview

Quantity:	100 µg
Target:	STAT4
Binding Specificity:	pTyr693
Reactivity:	Human, Mouse, Rat, Dog, Chicken, Cow
Host:	Rabbit
Clonality:	Polyclonal
Conjugate:	This STAT4 antibody is un-conjugated
Application:	Western Blotting (WB), Immunohistochemistry (IHC), ELISA, Immunoprecipitation (IP), Dot Blot (DB)

Product Details

Purpose:	Rabbit polyclonal antibody raised against synthetic phosphopeptide of STAT4.
Immunogen:	Synthetic phosphopeptide corresponding to residues surrounding Y693 of human, mouse, rat, bovine, chicken and dog STAT4.
Specificity:	This antibody recognizes STAT4 with a phosphorylated sites of Tyr693. It does not cross-react with non-phosphospecific peptide.
Cross-Reactivity:	Chicken, Cow, Dog, Human, Mouse, Rat
Characteristics:	Antibody Reactive Against Synthetic Peptide.

Target Details

Target:	STAT4
---------	-------

Target Details

Alternative Name: STAT4 ([STAT4 Products](#))

Pathways: [JAK-STAT Signaling](#)

Application Details

Application Notes: Western Blot (0.1-1 µg/mL)
ELISA (0.01-0.1 µg/mL)
Immunoprecipitation (2-5 µg/mL)
Immunohistochemistry (1:50)
The optimal working dilution should be determined by the end user.

Restrictions: For Research Use only

Handling

Format: Liquid

Buffer: In TBS, pH 7.2 (BSA, 10 % Proclin300)

Preservative: ProClin

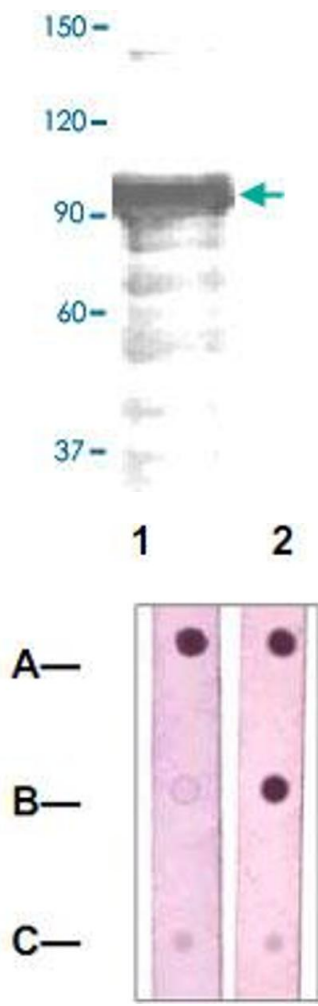
Precaution of Use: This product contains ProClin: a POISONOUS AND HAZARDOUS SUBSTANCE which should be handled by trained staff only.

Storage: -20 °C, -80 °C

Storage Comment: Store at -20°C. For long term storage store at -80°C.
Aliquot to avoid repeated freezing and thawing.

Publications

Product cited in: Miyagi, Gil, Wang, Louten, Chu, Biron: "High basal STAT4 balanced by STAT1 induction to control type 1 interferon effects in natural killer cells." in: **The Journal of experimental medicine**, Vol. 204, Issue 10, pp. 2383-96, (2007) ([PubMed](#)).



Western Blotting

Image 1. The whole tissue lysate derived from mouse kidney was immunoblotted by STAT4 (phospho Y693) polyclonal antibody at 1 : 500.

Dot Blot

Image 2. Dot Blot : 1 ug peptide was blot onto NC membrane. A : STAT4 (pY694, Phospho-specific). B : STAT4 (Paired Y694, Non phospho-speicfic). C : Non-related phospho-specific peptide were blotted at a 1 : 2000 dilution by STAT4 (phospho Y693) polyclonal antibody .