

Datasheet for ABIN541271

**anti-SH3GLB1 antibody (C-Term)**[2 Images](#)[2 Publications](#)[Go to Product page](#)

## Overview

Quantity:	100 µg
Target:	SH3GLB1
Binding Specificity:	C-Term
Reactivity:	Human, Mouse
Host:	Rabbit
Clonality:	Polyclonal
Conjugate:	This SH3GLB1 antibody is un-conjugated
Application:	Western Blotting (WB), Immunocytochemistry (ICC)

## Product Details

Purpose:	Rabbit polyclonal antibody raised against synthetic peptide of SH3GLB1.
Immunogen:	A synthetic peptide corresponding to C-terminus 15 amino acids of human SH3GLB1.
Cross-Reactivity:	Human, Mouse

## Target Details

Target:	SH3GLB1
Alternative Name:	Endophilin-B1 ( <a href="#">SH3GLB1 Products</a> )
Gene ID:	51100
Pathways:	<a href="#">Autophagy</a>

## Application Details

Application Notes:	Western Blot (1-2 µg/mL) The optimal working dilution should be determined by the end user.
--------------------	--

Restrictions:	For Research Use only
---------------	-----------------------

## Handling

Format:	Liquid
---------	--------

Buffer:	In PBS (0.02 % sodium azide)
---------	------------------------------

Preservative:	Sodium azide
---------------	--------------

Precaution of Use:	This product contains Sodium azide: a POISONOUS AND HAZARDOUS SUBSTANCE which should be handled by trained staff only.
--------------------	--

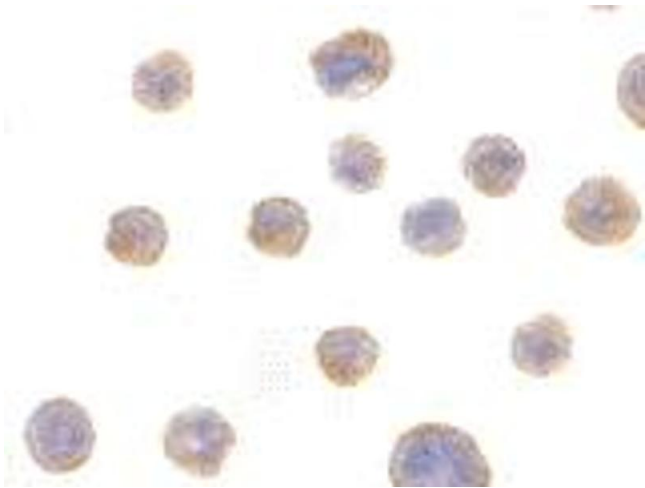
Storage:	4 °C,-20 °C
----------	-------------

Storage Comment:	Store at 4°C for three months. For long term storage store at -20°C. Aliquot to avoid repeated freezing and thawing.
------------------	---

## Publications

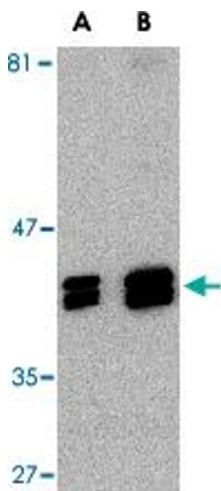
Product cited in:	Cuddeback, Yamaguchi, Komatsu, Miyashita, Yamada, Wu, Singh, Wang: "Molecular cloning and characterization of Bif-1. A novel Src homology 3 domain-containing protein that associates with Bax." in: <b>The Journal of biological chemistry</b> , Vol. 276, Issue 23, pp. 20559-65, (2001) ( <a href="#">PubMed</a> ).
-------------------	--

	Lockshin, Osborne, Zakeri: "Cell death in the third millennium." in: <b>Cell death and differentiation</b> , Vol. 7, Issue 1, pp. 2-7, (2000) ( <a href="#">PubMed</a> ).
--	---



Immunocytochemistry

**Image 1.** Immunocytochemistry of SH3GLB1 in HeLa with SH3GLB1 polyclonal antibody at 10 ug/mL .



Western Blotting

**Image 2.** Western blot analysis of SH3GLB1 in HeLa cell lysate with SH3GLB1 polyclonal antibody at (A) 1 and (B) 2 ug/mL .