



[Go to Product page](#)

Datasheet for ABIN541292

anti-TARBP1 antibody (Internal Region)

1 Image

Overview

Quantity:	100 µg
Target:	TARBP1
Binding Specificity:	Internal Region
Reactivity:	Human, Mouse
Host:	Rabbit
Clonality:	Polyclonal
Conjugate:	This TARBP1 antibody is un-conjugated
Application:	Western Blotting (WB)

Product Details

Purpose:	Rabbit polyclonal antibody raised against synthetic peptide of TARBP1.
Immunogen:	A synthetic peptide corresponding to internal region 17 amino acids of human TARBP1.
Cross-Reactivity:	Human, Mouse

Target Details

Target:	TARBP1
Alternative Name:	TARBP1 (TARBP1 Products)
Gene ID:	6894

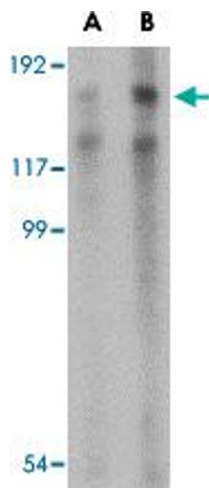
Application Details

Application Notes:	Western Blot (1-2 µg/mL) The optimal working dilution should be determined by the end user.
Restrictions:	For Research Use only

Handling

Format:	Liquid
Buffer:	In PBS (0.02 % sodium azide)
Preservative:	Sodium azide
Precaution of Use:	This product contains Sodium azide: a POISONOUS AND HAZARDOUS SUBSTANCE which should be handled by trained staff only.
Storage:	4 °C,-20 °C
Storage Comment:	Store at 4°C for three months. For long term storage store at -20°C. Aliquot to avoid repeated freezing and thawing.

Images



Western Blotting

Image 1. Western blot analysis of TARBP1 in NIH/3T3 cell lysate with TARBP1 polyclonal antibody at (A) 1 and (B) 2 µg/mL .