

Datasheet for ABIN541409  
**anti-DIABLO antibody (AA 225-239)**[2 Images](#)[3 Publications](#)[Go to Product page](#)

## Overview

Quantity:	100 µg
Target:	DIABLO
Binding Specificity:	AA 225-239
Reactivity:	Human, Mouse, Rat
Host:	Rabbit
Clonality:	Polyclonal
Conjugate:	This DIABLO antibody is un-conjugated
Application:	Western Blotting (WB), Immunohistochemistry (Paraffin-embedded Sections) (IHC (p))

## Product Details

Purpose:	Rabbit polyclonal antibody raised against synthetic peptide of DIABLO.
Immunogen:	A synthetic peptide corresponding to amino acids 225-239 of human DIABLO.
Specificity:	Human heart tissue lysate can be used as positive control and a 25 KDa band can be detected.
Cross-Reactivity:	Human, Mouse, Rat

## Target Details

Target:	DIABLO
Alternative Name:	DIABLO / SMAC ( <a href="#">DIABLO Products</a> )
Gene ID:	56616
Pathways:	<a href="#">Apoptosis</a> , <a href="#">Caspase Cascade in Apoptosis</a> , <a href="#">Positive Regulation of Endopeptidase Activity</a>

## Application Details

Application Notes:	Western Blot (0.5-1 µg/mL) The optimal working dilution should be determined by the end user.
--------------------	--

Restrictions:	For Research Use only
---------------	-----------------------

## Handling

Format:	Liquid
---------	--------

Buffer:	In PBS (0.02 % sodium azide)
---------	------------------------------

Preservative:	Sodium azide
---------------	--------------

Precaution of Use:	This product contains Sodium azide: a POISONOUS AND HAZARDOUS SUBSTANCE which should be handled by trained staff only.
--------------------	--

Storage:	4 °C,-20 °C
----------	-------------

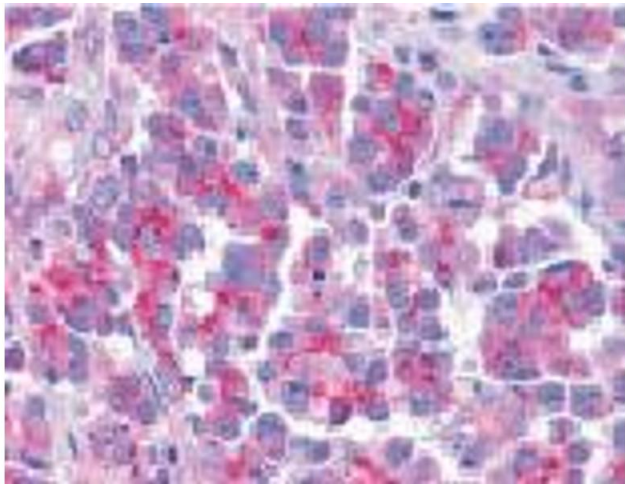
Storage Comment:	Store at 4°C for three months. For long term storage store at -20°C. Aliquot to avoid repeated freezing and thawing.
------------------	---

## Publications

Product cited in:	Du, Fang, Li, Li, Wang: "Smac, a mitochondrial protein that promotes cytochrome c-dependent caspase activation by eliminating IAP inhibition." in: <b>Cell</b> , Vol. 102, Issue 1, pp. 33-42, (2000) ( <a href="#">PubMed</a> ).
-------------------	---

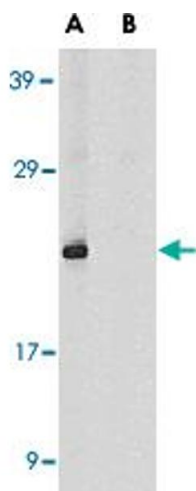
Srinivasula, Datta, Fan, Fernandes-Alnemri, Huang, Alnemri: "Molecular determinants of the caspase-promoting activity of Smac/DIABLO and its role in the death receptor pathway." in: **The Journal of biological chemistry**, Vol. 275, Issue 46, pp. 36152-7, (2000) ([PubMed](#)).

Chai, Du, Wu, Kyin, Wang, Shi: "Structural and biochemical basis of apoptotic activation by Smac/DIABLO." in: **Nature**, Vol. 406, Issue 6798, pp. 855-62, (2000) ([PubMed](#)).



Immunohistochemistry

**Image 1.** Immunohistochemistry of DIABLO in human ovary tissue with DIABLO polyclonal antibody at 5 ug/mL .



Western Blotting

**Image 2.** Western blot analysis of DIABLO in human heart tissue lysate in the absence (A) or presence (B) of blocking peptide with DIABLO polyclonal antibody at 1 ug /mL .