

Datasheet for ABIN541431
anti-ANTXR1 antibody (Internal Region)[Go to Product page](#)

2 Images

Overview

Quantity:	100 µg
Target:	ANTXR1
Binding Specificity:	Internal Region
Reactivity:	Human, Mouse, Rat
Host:	Rabbit
Clonality:	Polyclonal
Conjugate:	This ANTXR1 antibody is un-conjugated
Application:	Western Blotting (WB), Immunohistochemistry (Paraffin-embedded Sections) (IHC (p))

Product Details

Purpose:	Rabbit polyclonal antibody raised against synthetic peptide of ANTXR1.
Immunogen:	A synthetic peptide corresponding to internal region 13 amino acids of human ANTXR1.
Specificity:	It is human, mouse, and rat reactive. It will recognize all three isoforms.
Cross-Reactivity:	Human, Mouse, Rat

Target Details

Target:	ANTXR1
Alternative Name:	Anthrax toxin receptor 1 (ANTXR1 Products)
Gene ID:	84168

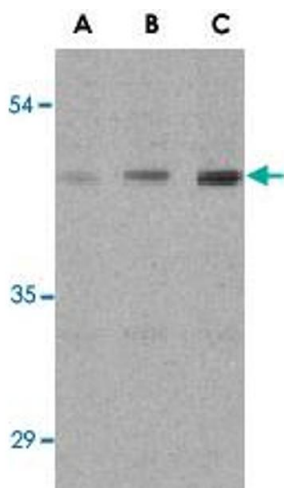
Application Details

Application Notes:	Western Blot (0.5-1 µg/mL) The optimal working dilution should be determined by the end user.
Restrictions:	For Research Use only

Handling

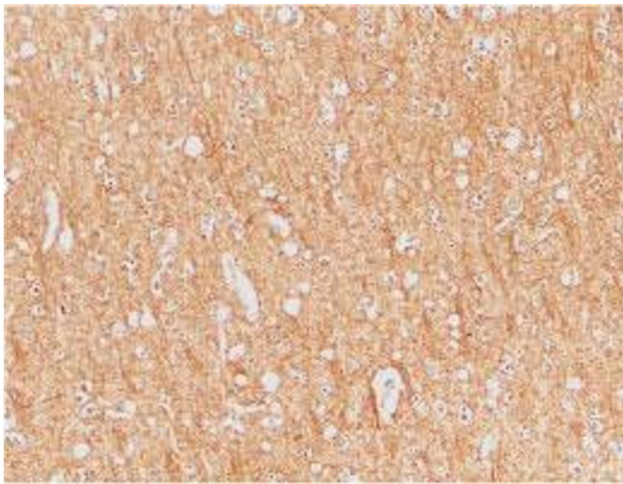
Format:	Liquid
Buffer:	In PBS (0.02 % sodium azide)
Preservative:	Sodium azide
Precaution of Use:	This product contains Sodium azide: a POISONOUS AND HAZARDOUS SUBSTANCE which should be handled by trained staff only.
Storage:	4 °C,-20 °C
Storage Comment:	Store at 4°C for three months. For long term storage store at -20°C. Aliquot to avoid repeated freezing and thawing.

Images



Western Blotting

Image 1. Western blot analysis of ANT XR1 in HepG2 cell lysates with ANT XR1 polyclonal antibody at (A) 0.5, (B) 1, and (C) 2 ug/mL .



Immunohistochemistry

Image 2. Immunohistochemical staining of human brain tissue using ANT XR1 polyclonal antibody at 2 ug/mL .