

Datasheet for ABIN541510
anti-ATF6 antibody (N-Term)[2 Images](#)[1 Publication](#)[Go to Product page](#)

Overview

Quantity:	100 µg
Target:	ATF6
Binding Specificity:	N-Term
Reactivity:	Human, Mouse
Host:	Rabbit
Clonality:	Polyclonal
Conjugate:	This ATF6 antibody is un-conjugated
Application:	Western Blotting (WB), Immunocytochemistry (ICC)

Product Details

Purpose:	Rabbit polyclonal antibody raised against synthetic peptide of ATF6.
Immunogen:	A synthetic peptide corresponding to N-terminus 17 amino acids of human ATF6.
Cross-Reactivity:	Human, Mouse

Target Details

Target:	ATF6
Alternative Name:	ATF6 alpha (ATF6 Products)
Gene ID:	22926
Pathways:	ER-Nucleus Signaling , Unfolded Protein Response

Application Details

Application Notes: Western Blot (0.5-1 µg/mL)
The optimal working dilution should be determined by the end user.

Restrictions: For Research Use only

Handling

Format: Liquid

Buffer: In PBS (0.02 % sodium azide)

Preservative: Sodium azide

Precaution of Use: This product contains Sodium azide: a POISONOUS AND HAZARDOUS SUBSTANCE which should be handled by trained staff only.

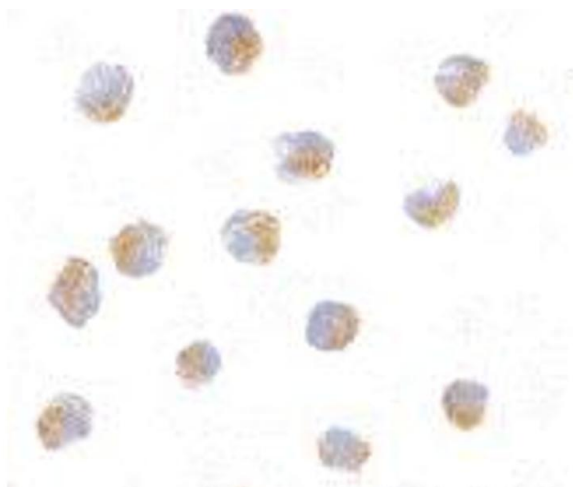
Storage: 4 °C, -20 °C

Storage Comment: Store at 4°C for three months. For long term storage store at -20°C.
Aliquot to avoid repeated freezing and thawing.

Publications

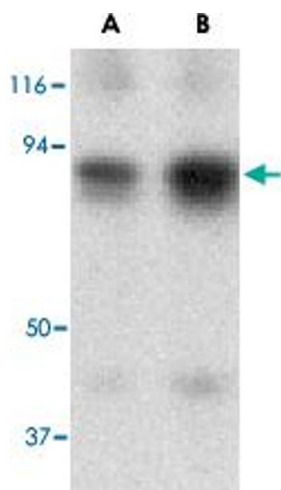
Product cited in: Liu, Kaufman: "The unfolded protein response." in: **Journal of cell science**, Vol. 116, Issue Pt 10, pp. 1861-2, (2003) ([PubMed](#)).

Images



Immunocytochemistry

Image 1. Immunocytochemistry of ATF6 in A-20 with ATF6 polyclonal antibody at 10 µg/mL .



Western Blotting

Image 2. Western blot analysis of ATF6 in MDA-MB-361 cell lysate with ATF6 polyclonal antibody at (A) 0.5 and (B) 1 ug/mL .