

Datasheet for ABIN541562
anti-SLUG antibody (Internal Region)[2 Images](#)[2 Publications](#)[Go to Product page](#)

Overview

Quantity:	100 µg
Target:	SLUG (SNAI2)
Binding Specificity:	Internal Region
Reactivity:	Human, Mouse
Host:	Rabbit
Clonality:	Polyclonal
Conjugate:	This SLUG antibody is un-conjugated
Application:	Western Blotting (WB), Immunofluorescence (IF)

Product Details

Purpose:	Rabbit polyclonal antibody raised against synthetic peptide of SNAI2.
Immunogen:	A synthetic peptide corresponding to internal region 13 amino acids of human SNAI2.
Cross-Reactivity:	Human, Mouse

Target Details

Target:	SLUG (SNAI2)
Alternative Name:	SNAI2 / SLUG (SNAI2 Products)
Gene ID:	6591

Application Details

Application Notes:	Western Blot (1-2 µg/mL) The optimal working dilution should be determined by the end user.
--------------------	--

Restrictions:	For Research Use only
---------------	-----------------------

Handling

Format:	Liquid
---------	--------

Buffer:	In PBS (0.02 % sodium azide)
---------	------------------------------

Preservative:	Sodium azide
---------------	--------------

Precaution of Use:	This product contains Sodium azide: a POISONOUS AND HAZARDOUS SUBSTANCE which should be handled by trained staff only.
--------------------	--

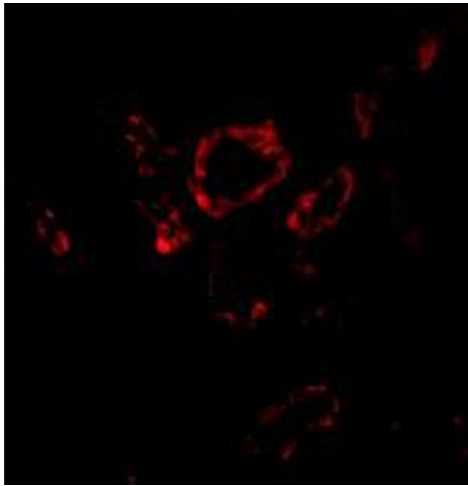
Storage:	4 °C,-20 °C
----------	-------------

Storage Comment:	Store at 4°C for three months. For long term storage store at -20°C. Aliquot to avoid repeated freezing and thawing.
------------------	---

Publications

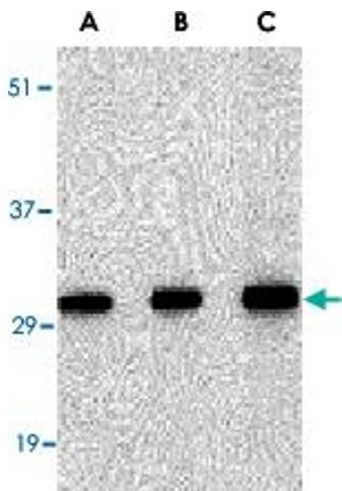
Product cited in:	Martínez-Estrada, Cullerés, Soriano, Peinado, Bolós, Martínez, Reina, Cano, Fabre, Vilaró: "The transcription factors Slug and Snail act as repressors of Claudin-1 expression in epithelial cells." in: The Biochemical journal , Vol. 394, Issue Pt 2, pp. 449-57, (2006) (PubMed).
-------------------	--

Shioiri, Shida, Koda, Oda, Seike, Nishimura, Takano, Miyazaki: "Slug expression is an independent prognostic parameter for poor survival in colorectal carcinoma patients." in: **British journal of cancer**, Vol. 94, Issue 12, pp. 1816-22, (2006) ([PubMed](#)).



Immunofluorescence

Image 1. Immunofluorescence of SNAI2 in human kidney tissue with SNAI2 polyclonal antibody at 20 ug/mL .



Western Blotting

Image 2. Western blot analysis of SNAI2 in 293 cell lysate with SNAI2 polyclonal antibody at in (A) 0.5, (B) 1 and (C) 2 ug/mL .