

Datasheet for ABIN541645 anti-CD248 antibody (C-Term)



[Go to Product page](#)

2 Images

3 Publications

Overview

Quantity:	100 µg
Target:	CD248
Binding Specificity:	C-Term
Reactivity:	Human, Mouse, Rat
Host:	Rabbit
Clonality:	Polyclonal
Conjugate:	This CD248 antibody is un-conjugated
Application:	Western Blotting (WB), Immunohistochemistry (Paraffin-embedded Sections) (IHC (p))

Product Details

Purpose:	Rabbit polyclonal antibody raised against synthetic peptide of CD248.
Immunogen:	A synthetic peptide corresponding to C-terminus 14 amino acids of human CD248.
Cross-Reactivity:	Human, Mouse, Rat

Target Details

Target:	CD248
Alternative Name:	CD248 / TEM1 (CD248 Products)
Gene ID:	57124

Application Details

Application Notes:	Western Blot (0.5-1 µg/mL) The optimal working dilution should be determined by the end user.
--------------------	--

Restrictions:	For Research Use only
---------------	-----------------------

Handling

Format:	Liquid
---------	--------

Buffer:	In PBS (0.02 % sodium azide)
---------	------------------------------

Preservative:	Sodium azide
---------------	--------------

Precaution of Use:	This product contains Sodium azide: a POISONOUS AND HAZARDOUS SUBSTANCE which should be handled by trained staff only.
--------------------	--

Storage:	4 °C
----------	------

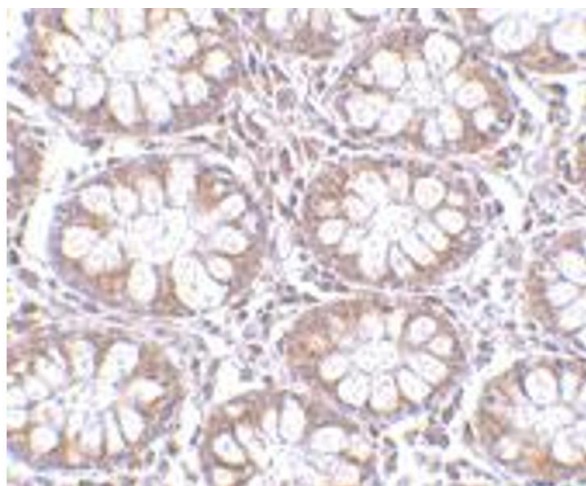
Storage Comment:	Store at 4°C for up to one year. Aliquot to avoid repeated freezing and thawing.
------------------	---

Publications

Product cited in:	Nanda, Karim, Peng, Liu, Qiu, Gan, Vogelstein, St Croix, Kinzler, Huso: "Tumor endothelial marker 1 (Tem1) functions in the growth and progression of abdominal tumors." in: Proceedings of the National Academy of Sciences of the United States of America , Vol. 103, Issue 9, pp. 3351-6, (2006) (PubMed).
-------------------	---

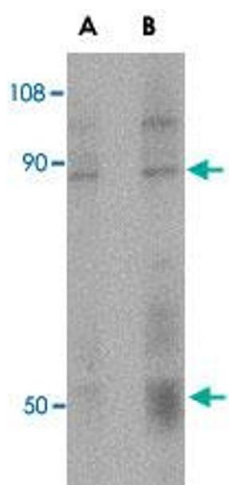
	Nanda, St Croix: "Tumor endothelial markers: new targets for cancer therapy." in: Current opinion in oncology , Vol. 16, Issue 1, pp. 44-9, (2003) (PubMed).
--	---

	Christian, Ahorn, Koehler, Eisenhaber, Rodi, Garin-Chesa, Park, Rettig, Lenter: "Molecular cloning and characterization of endosialin, a C-type lectin-like cell surface receptor of tumor endothelium." in: The Journal of biological chemistry , Vol. 276, Issue 10, pp. 7408-14, (2001) (PubMed).
--	---



Immunohistochemistry

Image 1. Immunohistochemistry of CD248 in human colon tissue with CD248 polyclonal antibody at 2.5 ug/mL .



Western Blotting

Image 2. Western blot analysis of CD248 in human colon tissue lysate with CD248 polyclonal antibody at (A) 0.5 and (B) 1 ug/mL .