

Datasheet for ABIN541771

anti-CTRP7 antibody (N-Term)

2 Images

2 Publications

[Go to Product page](#)

Overview

| | |
|----------------------|---|
| Quantity: | 100 µg |
| Target: | CTRP7 (C1QTNF7) |
| Binding Specificity: | N-Term |
| Reactivity: | Human, Mouse, Rat |
| Host: | Rabbit |
| Clonality: | Polyclonal |
| Conjugate: | This CTRP7 antibody is un-conjugated |
| Application: | Western Blotting (WB), Immunocytochemistry (ICC), Immunohistochemistry (Paraffin-embedded Sections) (IHC (p)) |

Product Details

| | |
|-------------------|--|
| Purpose: | Rabbit polyclonal antibody raised against synthetic peptide of C1QTNF7. |
| Immunogen: | A synthetic peptide corresponding to N-terminus 15 amino acids of human C1QTNF7. |
| Specificity: | CTRP7 antibody is human, mouse, and rat reactive. |
| Cross-Reactivity: | Human, Mouse, Rat |

Target Details

| | |
|-------------------|--|
| Target: | CTRP7 (C1QTNF7) |
| Alternative Name: | C1QTNF7 (C1QTNF7 Products) |
| Gene ID: | 114905 |

Application Details

| | |
|--------------------|--|
| Application Notes: | Western Blot (0.5 µg/mL) The optimal working dilution should be determined by the end user. |
|--------------------|--|

| | |
|---------------|-----------------------|
| Restrictions: | For Research Use only |
|---------------|-----------------------|

Handling

| | |
|---------|--------|
| Format: | Liquid |
|---------|--------|

| | |
|---------|------------------------------|
| Buffer: | In PBS (0.02 % sodium azide) |
|---------|------------------------------|

| | |
|---------------|--------------|
| Preservative: | Sodium azide |
|---------------|--------------|

| | |
|--------------------|--|
| Precaution of Use: | This product contains Sodium azide: a POISONOUS AND HAZARDOUS SUBSTANCE which should be handled by trained staff only. |
|--------------------|--|

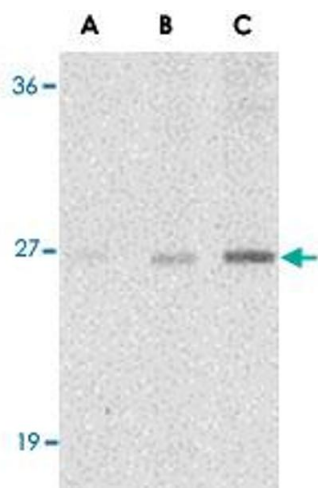
| | |
|----------|-------------|
| Storage: | 4 °C,-20 °C |
|----------|-------------|

| | |
|------------------|---|
| Storage Comment: | Store at 4°C for three months. For long term storage store at -20°C. Aliquot to avoid repeated freezing and thawing. |
|------------------|---|

Publications

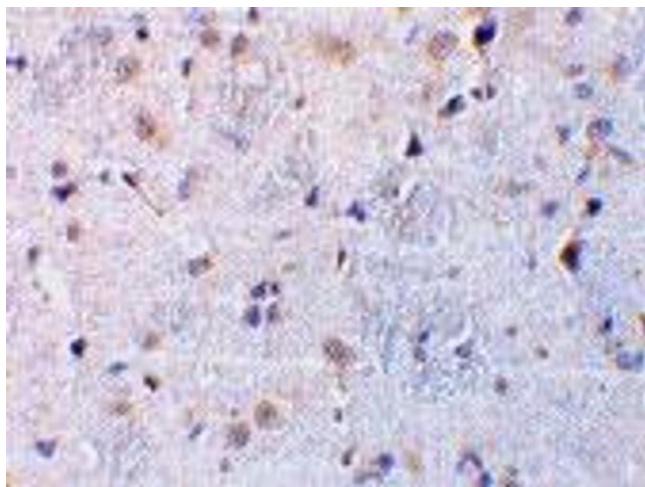
| | |
|-------------------|--|
| Product cited in: | Tsao, Lodish, Fruebis: "ACRP30, a new hormone controlling fat and glucose metabolism." in: European journal of pharmacology , Vol. 440, Issue 2-3, pp. 213-21, (2002) (PubMed). |
|-------------------|--|

Baveye, Ellass, Fernig, Blanquart, Mazurier, Legrand: "Human lactoferrin interacts with soluble CD14 and inhibits expression of endothelial adhesion molecules, E-selectin and ICAM-1, induced by the CD14-lipopolysaccharide complex." in: **Infection and immunity**, Vol. 68, Issue 12, pp. 6519-25, (2000) ([PubMed](#)).



Western Blotting

Image 1. Western blot analysis of C1QTNF7 in NIH/3T3 cell lysate with C1QTNF7 polyclonal antibody at (A) 1, (B) 2, and (C) 4 ug/mL .



Immunohistochemistry

Image 2. Immunohistochemical staining of rat brain tissue using C1QTNF7 polyclonal antibody at 10 ug/mL .