

Datasheet for ABIN542037
anti-Laminin alpha 1 antibody[Go to Product page](#)

1 Image

Overview

Quantity:	200 µL
Target:	Laminin alpha 1 (LAMA1)
Reactivity:	Mouse
Host:	Rabbit
Clonality:	Polyclonal
Conjugate:	This Laminin alpha 1 antibody is un-conjugated
Application:	Western Blotting (WB), Immunocytochemistry (ICC), Immunofluorescence (IF), Immunohistochemistry (Frozen Sections) (IHC (fro))

Product Details

Purpose:	Rabbit polyclonal antibody raised against full length native Lama1.
Immunogen:	Native purified mouse Lama1.
Specificity:	Recognizes laminin-1.
Cross-Reactivity:	Human, Mouse, Rat

Target Details

Target:	Laminin alpha 1 (LAMA1)
Alternative Name:	Laminin alpha 1 (LAMA1 Products)
Gene ID:	16772

Application Details

Application Notes:	Western Blot (1:1000-1:5000) Immunocytochemistry (1:100-1:2500) Immunofluorescence (1:100-1:2500) The optimal working dilution should be determined by the end user.
Restrictions:	For Research Use only

Handling

Format:	Liquid
Buffer:	In PBS (50 % glycerol, 0.01 % sodium azide)
Preservative:	Sodium azide
Precaution of Use:	This product contains Sodium azide: a POISONOUS AND HAZARDOUS SUBSTANCE which should be handled by trained staff only.
Storage:	-20 °C
Storage Comment:	Store at -20°C. Aliquot to avoid repeated freezing and thawing.

Images

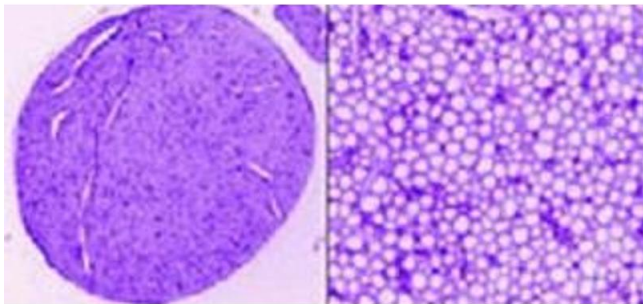


Image 1. Rat peripheral nerve (low and high magnification; formalin-fixed, frozen sections). Immuno-FITC stain (color inverted) with Lama1 polyclonal antibody (1 : 1,000).