

Datasheet for ABIN542370

anti-ASH2L antibody**3** Images[Go to Product page](#)

Overview

| | |
|--------------|---|
| Quantity: | 100 µL |
| Target: | ASH2L |
| Reactivity: | Mouse |
| Host: | Rabbit |
| Clonality: | Polyclonal |
| Conjugate: | This ASH2L antibody is un-conjugated |
| Application: | Western Blotting (WB), ELISA, Immunofluorescence (IF) |

Product Details

| | |
|------------|---|
| Purpose: | Rabbit polyclonal antibody raised against synthetic peptide of Ash2L. |
| Immunogen: | A mixture of synthetic peptides (conjugated with KLH) that two corresponding to internal region and one to C-terminus of mouse Ash2L. |

Target Details

| | |
|-------------------|---|
| Target: | ASH2L |
| Alternative Name: | ASH2L / ASH2L1 (ASH2L Products) |

Application Details

| | |
|--------------------|--|
| Application Notes: | ELISA (1:100-1:500) Immunofluorescence (1:200) Western Blot (1:500-1:1000) |
|--------------------|--|

Application Details

The optimal working dilution should be determined by the end user.

Restrictions: For Research Use only

Handling

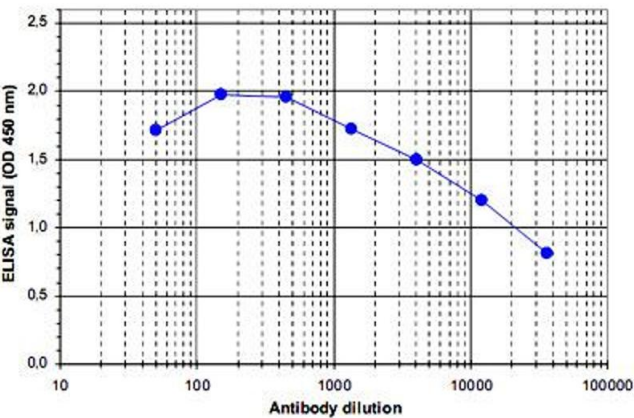
Format: Liquid

Buffer: In whole antiserum (0.05 % sodium azide).

Storage: -20 °C,-80 °C

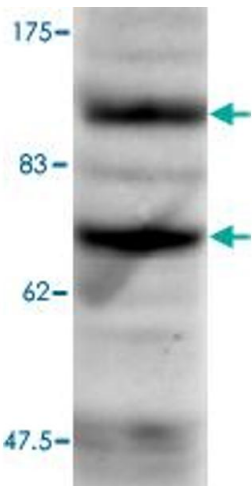
Storage Comment: Store at -20°C. For long term storage store at -80°C.
Aliquot to avoid repeated freezing and thawing.

Images



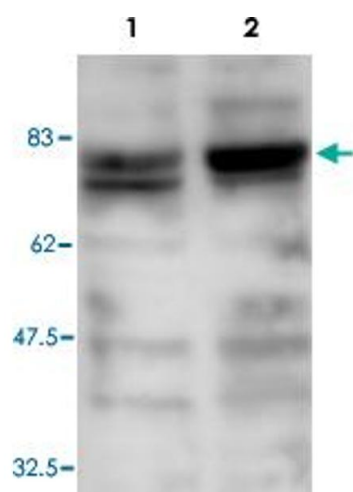
ELISA

Image 1. ELISA was performed using a serial dilution of Ash2l polyclonal antibody . By plotting the absorbance against the antibody dilution, the titer of the crude serum was estimated to be 1 : 24,000.



Western Blotting

Image 2. B. Western blot was performed on whole cell lysates from mouse neural stem cells (NS), transfected with GFP tagged Ash2, with Ash2l polyclonal antibody , diluted 1 : 500 in BSA/PBS-Tween.



Western Blotting

Image 3. Western blot was performed on whole cell lysates from mouse fibroblastst (Lane 1, NIH/3T3) and embryonic stem cells (Lane 2, E14Tg2a) with Ash2l polyclonal antibody , diluted 1 : 1,000 in BSA/PBS-Tween.