

Datasheet for ABIN542371

**anti-BRD2 antibody**

## 2 Images

[Go to Product page](#)

## Overview

Quantity:	100 µL
Target:	BRD2
Reactivity:	Mouse
Host:	Rabbit
Clonality:	Polyclonal
Conjugate:	This BRD2 antibody is un-conjugated
Application:	Western Blotting (WB), ELISA

## Product Details

Purpose:	Rabbit polyclonal antibody raised against synthetic peptide of Brd2.
Immunogen:	A synthetic peptide (conjugated with KLH) corresponding to internal region of mouse Brd2.

## Target Details

Target:	BRD2
Alternative Name:	BRD2 ( <a href="#">BRD2 Products</a> )
Pathways:	<a href="#">Chromatin Binding</a> , <a href="#">SARS-CoV-2 Protein Interactome</a> , <a href="#">The Global Phosphorylation Landscape of SARS-CoV-2 Infection</a>

## Application Details

Application Notes:	ELISA (1:50-1:200) Western Blot (1:1000)
--------------------	---

Application Details

The optimal working dilution should be determined by the end user.

Restrictions: For Research Use only

Handling

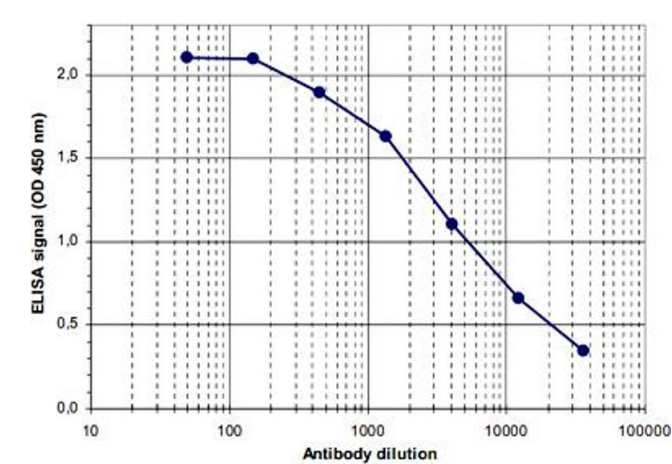
Format: Liquid

Buffer: In serum (0.05 % sodium azide)

Storage: -20 °C,-80 °C

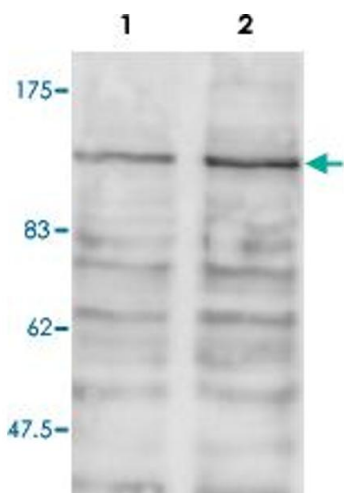
Storage Comment: Store at -20°C. For long term storage store at -80°C.  
Aliquot to avoid repeated freezing and thawing.

Images



ELISA

**Image 1.** ELISA was performed using a serial dilution of Brd2 polyclonal antibody . By plotting the absorbance against the antibody dilution, the titer of the crude serum was estimated to be 1 : 5,000.



Western Blotting

**Image 2.** Western blot was performed on whole cell lysates from mouse fibroblasts (Lane 1, NIH/3T3) and embryonic stem cells (Lane 2, E14Tg2a) with Brd2 polyclonal antibody , diluted 1 : 1,000 in BSA/PBS-Tween.