

Datasheet for ABIN542376

**anti-MLL2 antibody****1** Image[Go to Product page](#)

## Overview

Quantity:	100 µL
Target:	MLL2
Reactivity:	Mouse
Host:	Rabbit
Clonality:	Polyclonal
Conjugate:	This MLL2 antibody is un-conjugated
Application:	ELISA, Western Blotting (WB)

## Product Details

Purpose:	Rabbit polyclonal antibody raised against synthetic peptide of Mll2.
Immunogen:	A mixture of synthetic peptides (conjugated with KLH) that two corresponding to N-terminus and one to internal region of mouse Mll2.

## Target Details

Target:	MLL2
Alternative Name:	MLL2 ( <a href="#">MLL2 Products</a> )
Pathways:	<a href="#">Intracellular Steroid Hormone Receptor Signaling Pathway</a> , <a href="#">Regulation of Intracellular Steroid Hormone Receptor Signaling</a> , <a href="#">Warburg Effect</a>

## Application Details

Application Notes:	ELISA (1:200-1:2000)
--------------------	----------------------

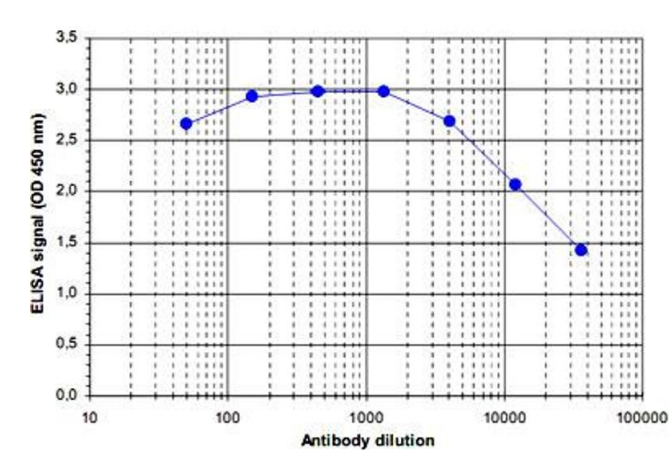
Application Details

	Western Blot (1:500)
	The optimal working dilution should be determined by the end user.
Restrictions:	For Research Use only

Handling

Format:	Liquid
Buffer:	In serum (0.05 % sodium azide)
Storage:	-20 °C,-80 °C
Storage Comment:	Store at -20°C. For long term storage store at -80°C. Aliquot to avoid repeated freezing and thawing.

Images



**ELISA**

**Image 1.** ELISA was performed using a serial dilution of MII2 polyclonal antibody . The wells were coated with thepeptides used for immunisation of the rabbit. By plotting the absorbance against the antibodydilution, the titer of the crude serum was estimated to be 1 : 32,500.