

Datasheet for ABIN542377

anti-MLL4 antibody**2** Images[Go to Product page](#)

Overview

Quantity:	100 µL
Target:	MLL4
Reactivity:	Mouse
Host:	Rabbit
Clonality:	Polyclonal
Conjugate:	This MLL4 antibody is un-conjugated
Application:	ELISA, Western Blotting (WB)

Product Details

Purpose:	Rabbit polyclonal antibody raised against synthetic peptide of Mll4.
Immunogen:	A mixture of synthetic peptides (conjugated with KLH) that corresponding to internal region of mouse Mll4.

Target Details

Target:	MLL4
Alternative Name:	MLL4 (MLL4 Products)
Pathways:	Intracellular Steroid Hormone Receptor Signaling Pathway , Regulation of Intracellular Steroid Hormone Receptor Signaling , Warburg Effect

Application Details

Application Notes:	ELISA (1:100-1:500)
--------------------	---------------------

Application Details

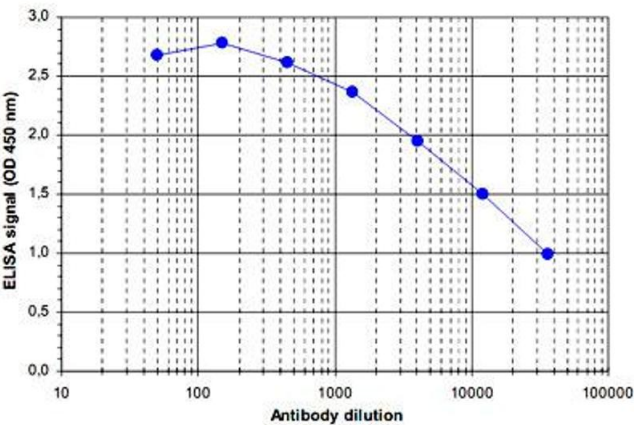
Western Blot (1:500)	
The optimal working dilution should be determined by the end user.	

Restrictions: For Research Use only

Handling

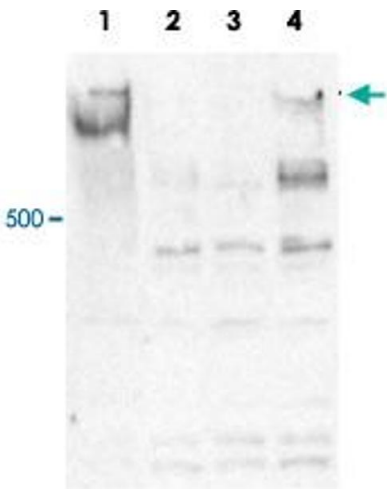
Format:	Liquid
Buffer:	In serum (0.05 % sodium azide)
Storage:	-20 °C,-80 °C
Storage Comment:	Store at -20°C. For long term storage store at -80°C. Aliquot to avoid repeated freezing and thawing.

Images



ELISA

Image 1. ELISA was performed using a serial dilution of Mll4 polyclonal antibody . The wells were coated with the peptides used for immunisation of the rabbit. By plotting the absorbance against the antibody dilution, the titer of the crude serum was estimated to be 1 : 15,000.



Western Blotting

Image 2. Western blot was performed on whole cell lysates from mouse embryonic stem cells (E14Tg2a) with Mll4 polyclonal antibody , diluted 1 : 500 in PBS-Tween containing 5% skimmed milk. Cells homozygous for the targeted mll4 allele (-/-, Lane 2 and 3) show a complete loss of Mll4 protein, whereas the Mll4 protein was detected in flp-recombined ES cells (F/F, Lane 4) and heterozygously targeted ES cells (+/-, Lane 1).