

Datasheet for ABIN542393

anti-SETD1A antibody[Go to Product page](#)

1 Image

Overview

Quantity:	100 µL
Target:	SETD1A
Reactivity:	Mouse
Host:	Rabbit
Clonality:	Polyclonal
Conjugate:	This SETD1A antibody is un-conjugated
Application:	ELISA, Western Blotting (WB)

Product Details

Purpose:	Rabbit polyclonal antibody raised against synthetic peptide of Setd1a.
Immunogen:	A mixture of synthetic peptides (conjugated with KLH), of which two correspond to N-terminus and one to internal region of mouse Setd1a.

Target Details

Target:	SETD1A
Alternative Name:	SETD1A (SETD1A Products)

Application Details

Application Notes:	ELISA (1:100) Western Blot (1:500) The optimal working dilution should be determined by the end user.
--------------------	---

Application Details

Restrictions: For Research Use only

Handling

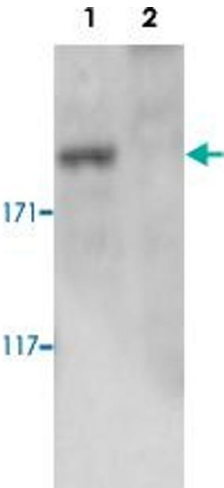
Format: Liquid

Buffer: In serum (0.05 % sodium azide)

Storage: -20 °C,-80 °C

Storage Comment: Store at -20°C. For long term storage store at -80°C.
Aliquot to avoid repeated freezing and thawing.

Images



Western Blotting

Image 1. Western blot was performed on whole cell lysates from mouse fibroblasts (Lane 1, NIH/3T3) and embryonic stem cells (Lane 2, E14Tg2a) with Setd1a polyclonal antibody, diluted 1 : 500 in BSA/PBS-Tween.