

Datasheet for ABIN542430

anti-PHF8 antibody**2** Images[Go to Product page](#)

Overview

Quantity:	50 µg
Target:	PHF8
Reactivity:	Human, Mouse
Host:	Rabbit
Clonality:	Polyclonal
Conjugate:	This PHF8 antibody is un-conjugated
Application:	Western Blotting (WB), ELISA

Product Details

Purpose:	Rabbit polyclonal antibody raised against synthetic peptide of PHF8.
Immunogen:	A mixture of synthetic peptides (conjugated with KLH) that corresponding to human PHF8.
Cross-Reactivity:	Human, Mouse

Target Details

Target:	PHF8
Alternative Name:	PHF8 / ZNF422 (PHF8 Products)
Gene ID:	23133

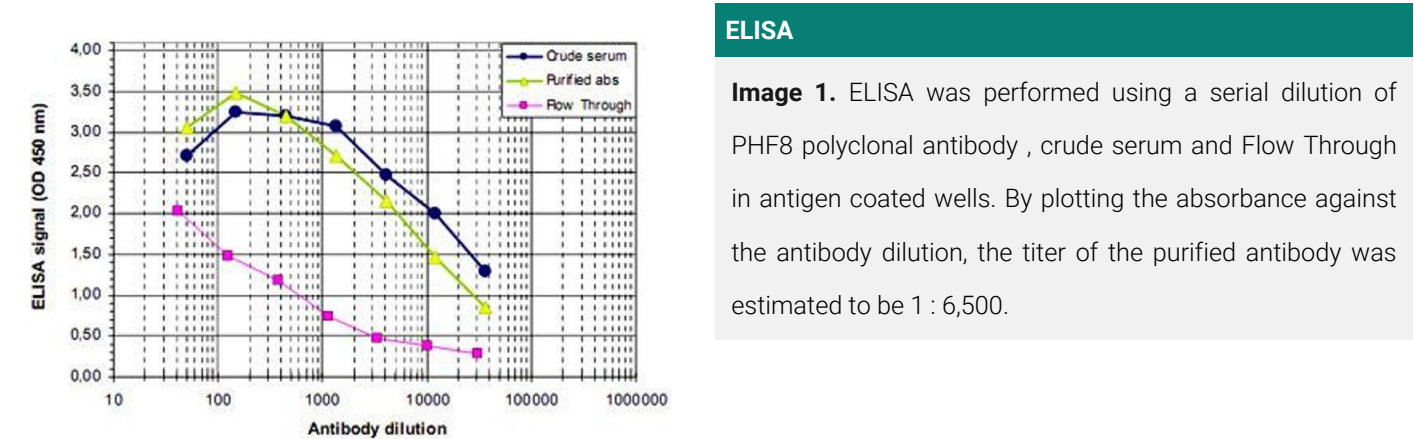
Application Details

Application Notes:	ELISA (1:100-1:500)
--------------------	---------------------

Application Details

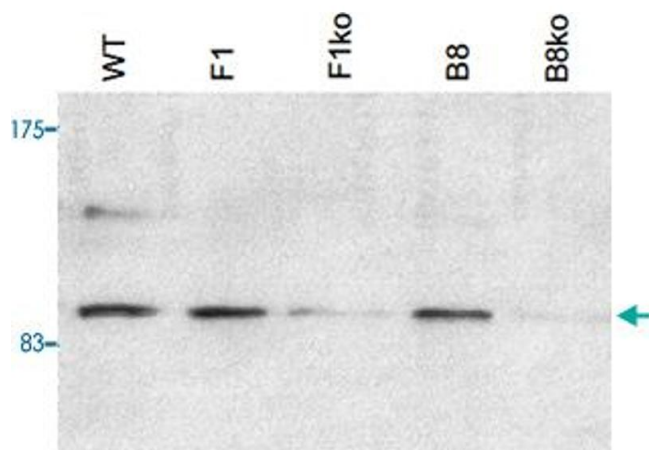
	Western Blot (1:1000)
	The optimal working dilution should be determined by the end user.
Restrictions:	For Research Use only
Handling	
Format:	Liquid
Buffer:	In PBS (0.05 % sodium azide, 0.05 % proclin 300)
Preservative:	ProClin, Sodium azide
Precaution of Use:	This product contains ProClin and Sodium azide: POISONOUS AND HAZARDOUS SUBSTANCES which should be handled by trained staff only.
Storage:	-20 °C,-80 °C
Storage Comment:	Store at -20°C. For long term storage store at -80°C. Aliquot to avoid repeated freezing and thawing.

Images



ELISA

Image 1. ELISA was performed using a serial dilution of PHF8 polyclonal antibody , crude serum and Flow Through in antigen coated wells. By plotting the absorbance against the antibody dilution, the titer of the purified antibody was estimated to be 1 : 6,500.



Western Blotting

Image 2. E14TG2A (mouse embryonic stem cells) were transfected with a conditional allele of PHF8. Nuclear extracts (135 ug) from wild type cells (WT) and from 2 clones (F1, B8) with an active and a targeted allele (F1ko, B8ko), respectively, were analysed by Western blot using PHF8 polyclonal antibody. The antibody was diluted 1 : 1,000.