

Datasheet for ABIN542444  
**anti-LSD1 antibody (N-Term)**

## 3 Images

[Go to Product page](#)

## Overview

Quantity:	50 µg
Target:	LSD1 (KDM1A)
Binding Specificity:	N-Term
Reactivity:	Human
Host:	Rabbit
Clonality:	Polyclonal
Conjugate:	This LSD1 antibody is un-conjugated
Application:	Western Blotting (WB), ELISA, Immunoprecipitation (IP)

## Product Details

Purpose:	Rabbit polyclonal antibody raised against synthetic peptide of AOF2.
Immunogen:	A synthetic peptide (conjugated with KLH) corresponding to N-terminus of human AOF2.
Cross-Reactivity:	Human

## Target Details

Target:	LSD1 (KDM1A)
Alternative Name:	AOF2 ( <a href="#">KDM1A Products</a> )
Gene ID:	23028
Pathways:	<a href="#">Regulation of Hormone Metabolic Process</a> , <a href="#">Regulation of Hormone Biosynthetic Process</a> , <a href="#">Negative Regulation of intrinsic apoptotic Signaling</a> , <a href="#">Warburg Effect</a>

## Application Details

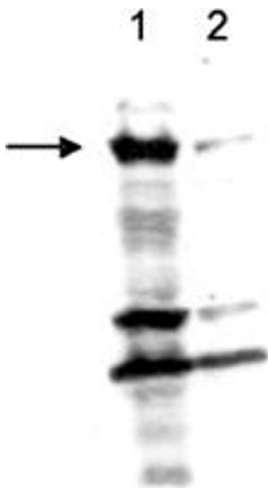
Application Notes:	ELISA (1:100) Western Blot (1:1000) Immunoprecipitation (2 µg/IP) The optimal working dilution should be determined by the end user.
--------------------	---

Restrictions:	For Research Use only
---------------	-----------------------

## Handling

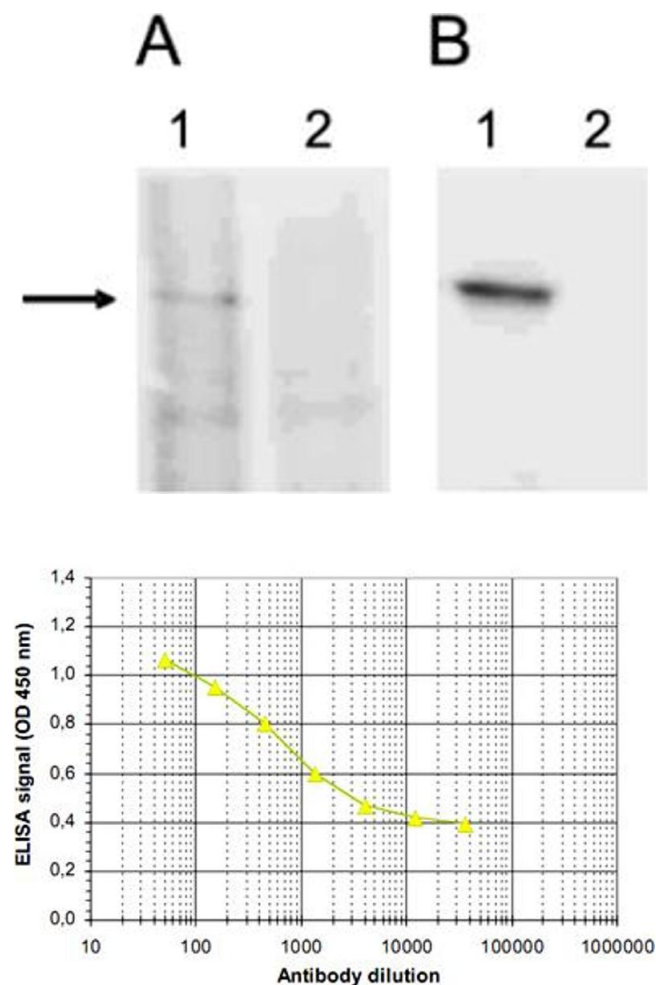
Format:	Liquid
Buffer:	In PBS (0.05 % sodium azide, 0.05 % proclin 300)
Preservative:	ProClin, Sodium azide
Precaution of Use:	This product contains ProClin and Sodium azide: POISONOUS AND HAZARDOUS SUBSTANCES which should be handled by trained staff only.
Storage:	-20 °C,-80 °C
Storage Comment:	Store at -20°C. For long term storage store at -80°C. Aliquot to avoid repeated freezing and thawing.

## Images



**Western Blotting**

**Image 1.** Western blot was performed using respectively 150 ug (Lane 1) or 50 ug (Lane 2) nuclear extracts from HeLa cells and AOF2 polyclonal antibody diluted 1 : 1,000.



### Western Blotting

**Image 2.** 293T cells were transiently transfected with an expression vector for HA-tagged AOF2 (Lanes 1) or with an empty vector (Lanes 2). A : Whole cell extracts were analysed by Western blot using AOF2 polyclonal antibody , diluted 1 : 1,000. B. Whole cell extracts were immunoprecipitated with 2 ug of AOF2 polyclonal antibody . Immunoprecipitates were analysed by Western blot as described above.

### ELISA

**Image 3.** ELISA was performed using a serial dilution of AOF2 polyclonal antibody . The plates were coated with the peptide used for immunization of the rabbit. By plotting the absorbance against the antibody dilution, the titer of the purified antibody was estimated to be 1 : 2,500.