



[Go to Product page](#)

Datasheet for ABIN542476

anti-NEFH antibody

2 Images

1 Publication

Overview

| | |
|--------------|---|
| Quantity: | 100 µL |
| Target: | NEFH |
| Reactivity: | Cow |
| Host: | Rabbit |
| Clonality: | Polyclonal |
| Conjugate: | This NEFH antibody is un-conjugated |
| Application: | Western Blotting (WB), Immunohistochemistry (IHC), ELISA, Immunofluorescence (IF) |

Product Details

| | |
|------------|---|
| Purpose: | Rabbit polyclonal antibody raised against NEFH. |
| Immunogen: | Bovine NEFH. |
| Isotype: | IgG |

Target Details

| | |
|-------------------|--|
| Target: | NEFH |
| Alternative Name: | Neurofilament H (200 kD) (NEFH Products) |

Application Details

| | |
|--------------------|---|
| Application Notes: | Western Blot (1:10000) Immunofluorescence (1:1000) The optimal working dilution should be determined by the end user. |
|--------------------|---|

Application Details

Restrictions: For Research Use only

Handling

Format: Liquid

Buffer: In serum (5 mM sodium azide)

Storage: -20 °C

Storage Comment: Store at -20°C.
Aliquot to avoid repeated freezing and thawing.

Publications

Product cited in: Hillier, Fulton, Fulton, Graves, Pepin, Wagner-McPherson, Layman, Maas, Jaeger, Walker, Wylie, Sekhon, Becker, OLaughlin, Schaller, Fewell, Delehaunty, Miner, Nash, Cordes, Du, Sun, Edwards et al.: "The DNA sequence of human chromosome 7. ..." in: **Nature**, Vol. 424, Issue 6945, pp. 157-64, (2003) ([PubMed](#)).

Images



Western Blotting

Image 1. Strip blot of crude rat spinal extract stained with NEFH polyclonal antibody . A prominent band at an apparent SDS-PAGE molecular weight of 200 KDa corresponds to phosphorylated NF-H.

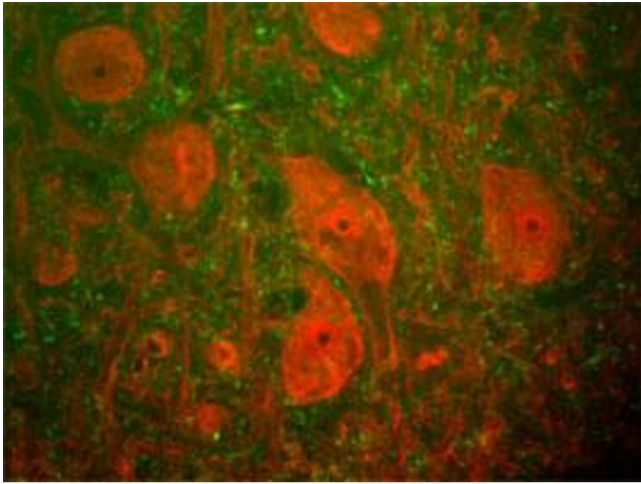


Image 2. A section of rat spinal cord stained with NEFH polyclonal antibody (green) and ubiquitin C-terminal hydrolase 1 monoclonal antibody (UCHL1) clone MCA-BH7 (red). The NEFH polyclonal antibody binds primarily to phosphorylated axonal forms of NEFH, and so stains axons coursing between the large UCHL1 positive neurons. These large cells are α -motorneurons and UCHL1 protein is a major component of the perikarya and dendrites of these cells.