



Datasheet for ABIN542620
anti-Synuclein antibody



[Go to Product page](#)

1 Image

3 Publications

Overview

Quantity:	100 µL
Target:	Synuclein (SYU)
Reactivity:	Human, Rat
Host:	Rabbit
Clonality:	Polyclonal
Conjugate:	This Synuclein antibody is un-conjugated
Application:	Western Blotting (WB), Immunohistochemistry (IHC)

Product Details

Purpose:	Rabbit polyclonal antibody raised against synthetic peptide of Synuclein (pan).
Immunogen:	A synthetic peptide (conjugated with diphtheria toxoid) corresponding to human Synuclein (pan).
Sequence:	AKEGVVAAAE KTKQGV
Isotype:	IgG
Specificity:	Overlap specific immunohistochemical staining of alpha-, beta- and gamma synucleins.
Cross-Reactivity:	Human, Rat
Purification:	Purified

Target Details

Target:	Synuclein (SYU)
---------	-----------------

Target Details

Alternative Name: Synuclein (pan) ([SYU Products](#))

Application Details

Application Notes: Immunohistochemistry (1:1000)
Western Blot (1:1000)
The optimal working dilution should be determined by the end user.

Restrictions: For Research Use only

Handling

Format: Lyophilized

Buffer: Lyophilized from PBS

Storage: 4 °C, -20 °C

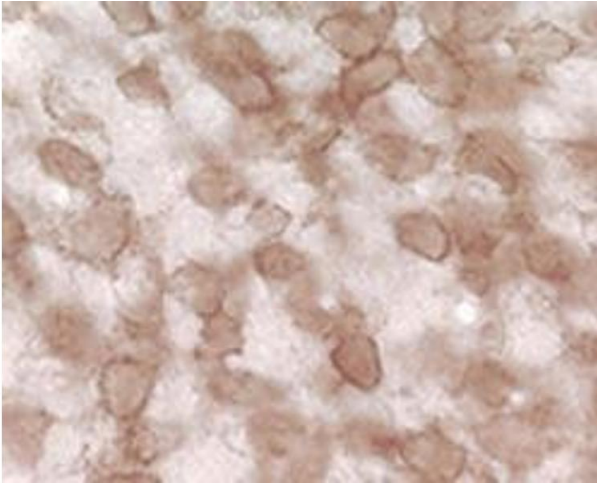
Storage Comment: Store at 4°C on dry atmosphere.
After reconstitution with deionized water, store at -20°C or lower.
Aliquot to avoid repeated freezing and thawing.

Publications

Product cited in: Bennett: "The role of alpha-synuclein in neurodegenerative diseases." in: **Pharmacology & therapeutics**, Vol. 105, Issue 3, pp. 311-31, (2005) ([PubMed](#)).

Lundvig, Lindersson, Jensen: "Pathogenic effects of alpha-synuclein aggregation." in: **Brain research. Molecular brain research**, Vol. 134, Issue 1, pp. 3-17, (2005) ([PubMed](#)).

Vekrellis, Rideout, Stefanis: "Neurobiology of alpha-synuclein." in: **Molecular neurobiology**, Vol. 30, Issue 1, pp. 1-21, (2004) ([PubMed](#)).



Immunohistochemistry

Image 1. Immunohistochemical staining of pan synuclein in rat cochlear nucleus using Synuclein (pan) polyclonal antibody .