

Datasheet for ABIN542707  
**anti-BMI1 antibody (C-Term)**[2 Images](#)[3 Publications](#)[Go to Product page](#)

## Overview

Quantity:	400 µL
Target:	BMI1
Binding Specificity:	C-Term
Reactivity:	Human, Mouse
Host:	Rabbit
Clonality:	Polyclonal
Conjugate:	This BMI1 antibody is un-conjugated
Application:	Western Blotting (WB), Immunohistochemistry (Paraffin-embedded Sections) (IHC (p))

## Product Details

Purpose:	Rabbit polyclonal antibody raised against synthetic peptide of BMI1.
Immunogen:	A synthetic peptide (conjugated with KLH) corresponding to C-terminus of human BMI1.
Cross-Reactivity:	Human, Mouse

## Target Details

Target:	BMI1
Alternative Name:	BMI-1 / RNF51 ( <a href="#">BMI1 Products</a> )
Gene ID:	648
Pathways:	<a href="#">Cell Division Cycle</a> , <a href="#">Autophagy</a>

## Application Details

Application Notes:	Western Blot (1:1000) Immunohistochemistry (1:50-100) The optimal working dilution should be determined by the end user.
--------------------	--

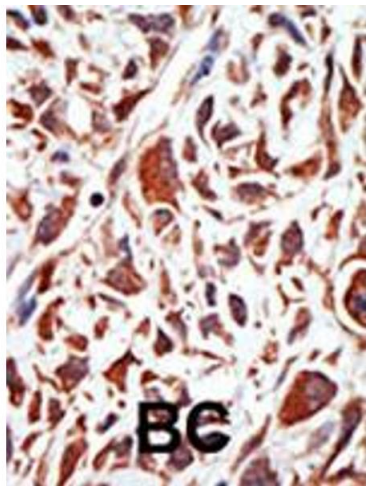
Restrictions:	For Research Use only
---------------	-----------------------

## Handling

Format:	Liquid
Buffer:	In PBS (0.09 % sodium azide)
Preservative:	Sodium azide
Precaution of Use:	This product contains Sodium azide: a POISONOUS AND HAZARDOUS SUBSTANCE which should be handled by trained staff only.
Storage:	4 °C,-20 °C
Storage Comment:	Store at 4°C. For long term storage store at -20°C. Aliquot to avoid repeated freezing and thawing.

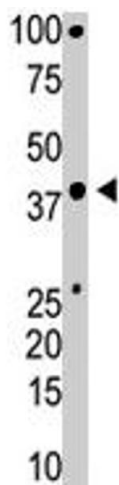
## Publications

Product cited in:	<p>Xia, Anderson, Diaz, Zeleznik-Le: "MLL repression domain interacts with histone deacetylases, the polycomb group proteins HPC2 and BMI-1, and the corepressor C-terminal-binding protein." in: <b>Proceedings of the National Academy of Sciences of the United States of America</b>, Vol. 100, Issue 14, pp. 8342-7, (2003) (<a href="#">PubMed</a>).</p> <p>Smith, Chanda, Lingbeek, Ross, Botstein, van Lohuizen, Cleary: "Bmi-1 regulation of INK4A-ARF is a downstream requirement for transformation of hematopoietic progenitors by E2a-Pbx1." in: <b>Molecular cell</b>, Vol. 12, Issue 2, pp. 393-400, (2003) (<a href="#">PubMed</a>).</p> <p>Itahana, Zou, Itahana, Martinez, Beausejour, Jacobs, Van Lohuizen, Band, Campisi, Dimri: "Control of the replicative life span of human fibroblasts by p16 and the polycomb protein Bmi-1." in: <b>Molecular and cellular biology</b>, Vol. 23, Issue 1, pp. 389-401, (2002) (<a href="#">PubMed</a>).</p>
-------------------	--



#### Immunohistochemistry

**Image 1.** Formalin-fixed and paraffin-embedded human cancer tissue reacted with BMI1 polyclonal antibody , which was peroxidase-conjugated to the secondary antibody, followed by DAB staining. This data demonstrates the use of this antibody for immunohistochemistry; clinical relevance has not been evaluated. BC = breast carcinoma.



#### Western Blotting

**Image 2.** The BMI1 polyclonal antibody is used in Western blot to detect BMI1 in mouse muscle tissue lysate.